

Presentation to Sullivan County Legislature

RESILIENT SULLIVAN

MUD Workshop with
thread collective | Urbanomics | eDesign Dynamics | BFJ Planning

25-Jan-2024

AGENDA

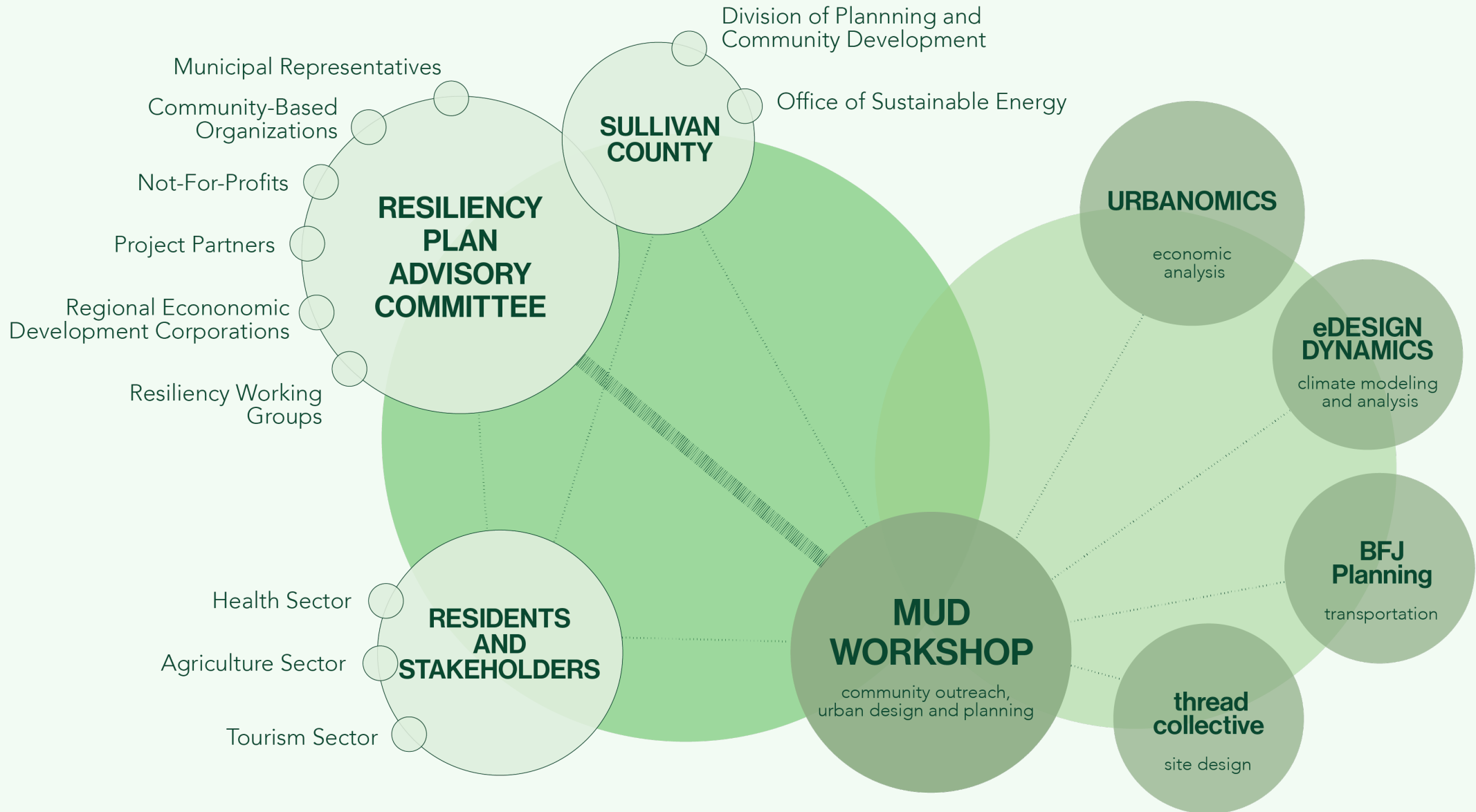
A/ PROJECT INTRO & GOALS

B/ ENGAGEMENT

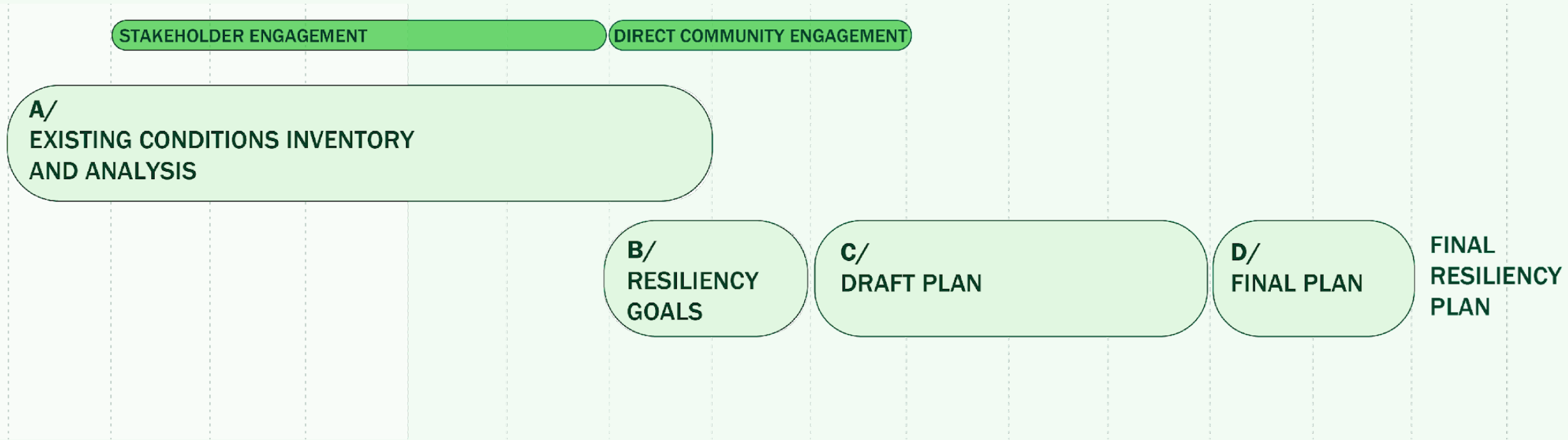
- Digital Engagement & Outreach
- Emerging Themes

C/ RECOMMENDATIONS

TEAM CHART



KEY MILESTONES



KEY COMMUNITY STAKEHOLDERS

TOWNS

- Town of Bethel
- Town of Callicoon
- Town of Cochecton
- Town of Delaware
- Town of Fallsburg
- Town of Forestburgh
- Town of Fremont
- Town of Highland
- Town of Liberty
- Town of Lumberland
- Town of Mamakating
- Town of Neversink
- Town of Rockland
- Town of Thompson
- Town of Tusten

VILLAGES

- Village of Bloomingburg
- Village of Jeffersonville
- Village of Liberty
- Village of Monticello
- Village of Woodridge
- Village of Wurtsboro

AGENCIES & ORGANIZATIONS

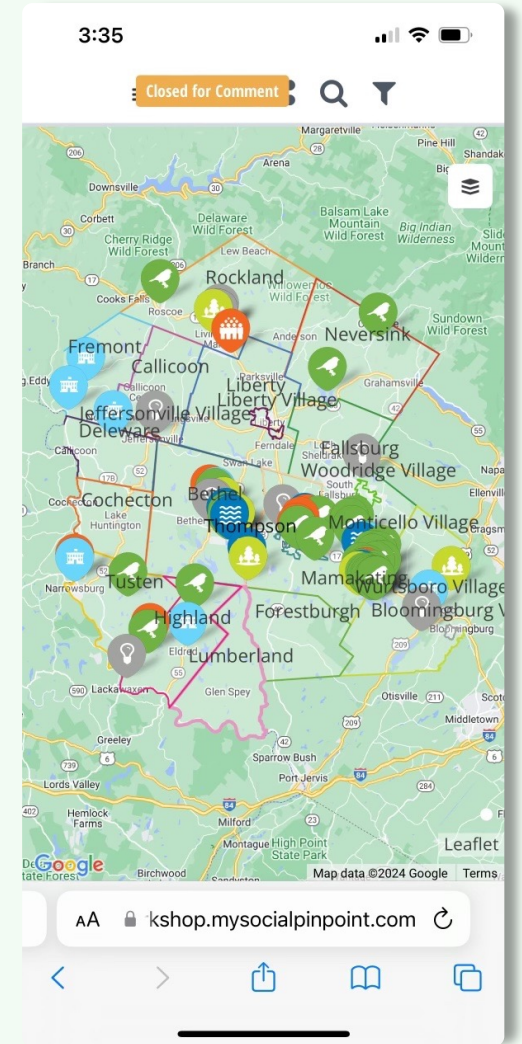
- SC Visitors Association
- SC Chamber of Commerce
- SC Partnership for Economic Development
- Cornell Cooperative Extension
- Soil and Water Conservation District
- Sullivan Renaissance
- Sullivan 180
- Delaware Highlands Conservancy
- NYSEG
- SC IDA
- Friends of the Upper Delaware
- Catskill Mountain keeper

ENGAGEMENT

DIGITAL ENGAGEMENT



www.resilientsullivan.com



Digital Mapping Tool

MUNICIPAL FACT SHEETS

Village of Monticello: Resiliency Fact Sheet

Demographic Key Points

6,429 residents of Monticello
8.5% of County population
~80% residents do not speak English at home

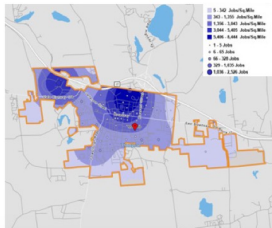
Linguistic Characteristics
 In Monticello, one in five residents (1,285), speak a language other than English at home. Spanish is spoken by more than 1000 residents.

Housing

3,044 housing units in Monticello
~50% multi-family structures
23.7% housing stock vacant for seasonal use
700 incoming housing units in 3 new approved apartment complexes

Housing Types
 Nearly half of the housing units in Monticello are multifamily structures.

Employment + Labor Force



8000+ jobs in Monticello
2,941 jobs in Health Care
752 persons live and work in Monticello

Tourism + Outdoor Recreation

In 2019, **24.9%** of Monticello's jobs were in Arts, Entertainment, and Accommodations.

Key Employers
 Garnet Health Medical Center - Catskills and the Resorts World Casino are the largest employers in the village.

- Monticello is the resort center of Sullivan County with establishments as listed.
- Nesin Culture Arts
 - Beer World
 - Top Golf Swing Suite
 - Monster Golf Course @ Resorts World Catskills
 - Resorts World Catskills
 - Holiday Mountain Action Sports
 - Holiday Mountain Ski & Fun Park
 - Monticello Motor Club
 - Monticello Raceway
 - The Katrite Resort & Indoor Waterpark
 - Town of Thompson Park
 - Starlight Marina
 - Crystal Life Spa
 - YO1 Health Resort

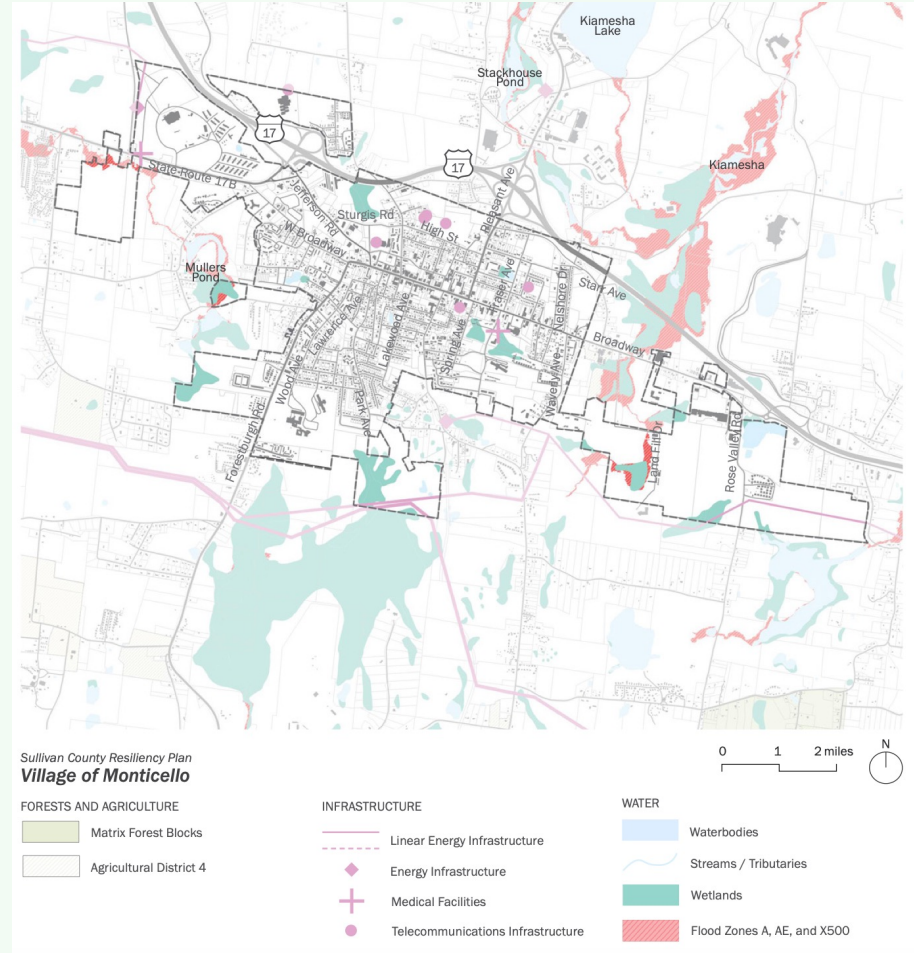
Risks and Vulnerable Locations

- 1** flooding
- 2** wind
- 3** snow storm
- 4** ice storm

Select Vulnerable Locations
 • Local streets and Route 97, running adjacent with the Delaware River, experience significant flooding

Flooding

169 or 9.25% at flood risk



STAKEHOLDER INTERVIEWS

- Town of Rockland
- Sullivan County Office of Sustainable Energy
- Sullivan County Chamber of Commerce
- Sullivan County Visitor's Association
- Sullivan County Department of Planning
- Delaware Highlands Conservancy
- Industrial Development Agency
- Friends of the Upper Delaware River
- Catskill Mountain Keeper
- Commissioner of Health and Human Services
- Public Works Commissioner
- Sullivan County Manager
- Sullivan County Fire Coordinator
- Commissioner of Community Resources
- Cornell Cooperative
- Local Farmers



Village of Monticello Walking Tour

WORKING SESSIONS

GOAL 4 / FOODS, JOBS, HEALTH AND SERVICES

Improve access to healthy food, healthcare, jobs, and emergency services.

Draft Strategies:

1. Address food deserts and food insecurity.

Support Catskills Food Hub A Single Bite, to get healthy foods into schools and homes and to provide nutrition education	Establishing Unite Us as Social Care Network - will make food easier to access via pantries and medicaid funding	Through Food Coalition continue efforts to build food security network	Sullivan Catskills Food Security Coalition	Map seasonal markets and identify gaps. Support expansion of mobile markets and mobile food pantries
CCE Sullivan Fresh Program-a mobile market program in food desert communities.				

2. Improve delivery of emergency services/recruitment needs for local fire & ambulance corps, perhaps among 2nd home owners.

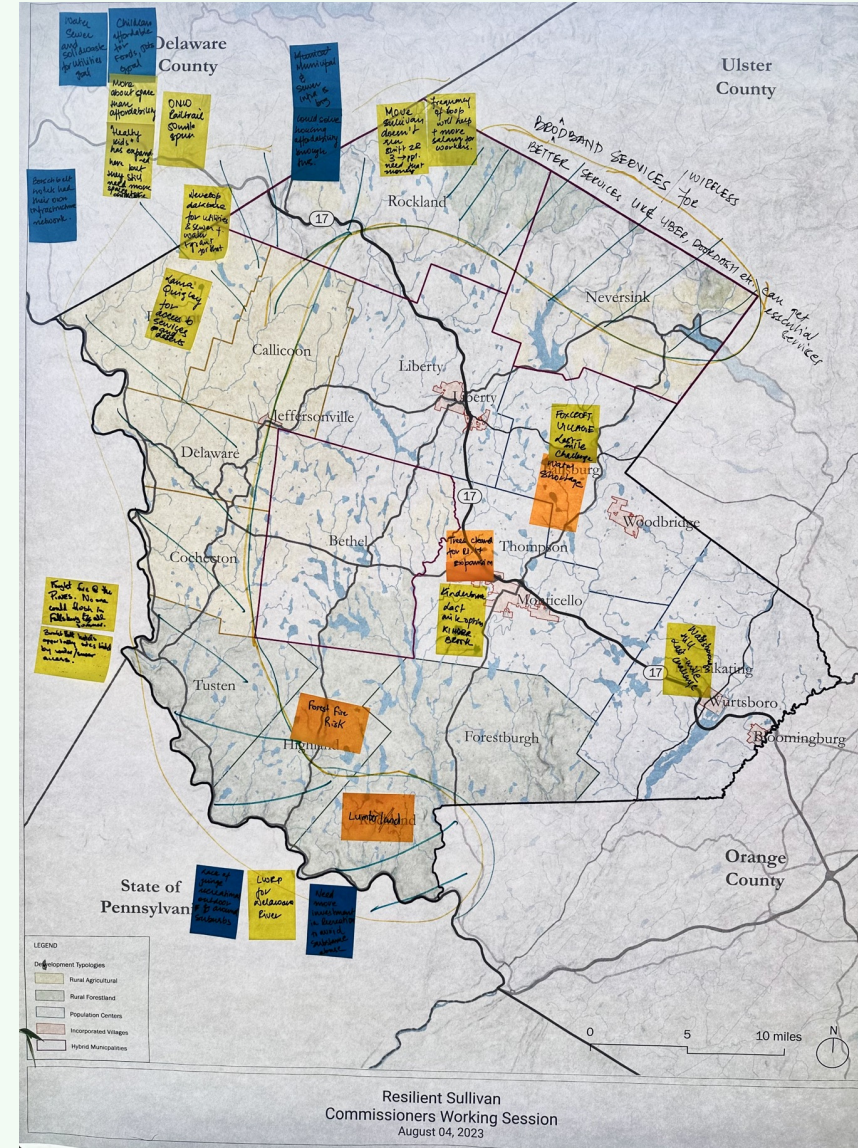
Reduce training requirements for persons to join fire and EMS in supporting roles	Provide compensation to volunteer agencies who are able to supplement paid service responses	Provide education benefits to young persons who join fire and EMS services		

3. Address mental health needs and opioid response.

Several outpatient substance use providers in county. Single inpatient facility needs more State support.	Serious investment in prevention programming that is family focused	Critical Time Intervention Teams are being added to Sullivan County by DMH - will supplement Mobile Mental Health	Astor Services to on county contract and starting to provide services in 3 biggest school districts	Unite Us network established and growing to improve access to medical and human services
Youth activities 3pm-7pm, FREE, in town centers				

4. Improve access to childcare to facilitate workforce availability

Child Care Council has begun efforts to increase number of provider businesses	Support professional development and living wages for child care workers	Need OCS and legislative support to open more facilities - DSS receiving support from state for tuition subsidies	Need to have State/Feds provide ongoing funding to support basic operations of child care	Expand access to transportation to childcare facilities



FARM VISIT



08/04/23 Farm Visit

EMERGING THEMES

HOUSING

1/
HOUSING AVAILABILITY AND AFFORDABILITY significantly challenge labor/employee attraction and retention.

2/
AGING and limited **HOUSING STOCK** further impact health and access especially for vulnerable populations.

FOOD, JOBS, & SERVICES

1/
Low density development contributes to Sullivan County's **RURAL CHARACTER** but also creates **ACCESSIBILITY ISSUES** related to food, jobs, and health care.

NATURAL RESOURCES & INFRASTRUCTURE

1/
The success of Sullivan County's **TOURISM INDUSTRY** is **INEXTRICABLY LINKED TO** the continued **MAINTENANCE OF** its **NATURAL RESOURCES**, including its uninterrupted forests, pristine waters, and bucolic farmland.

2/
Sullivan County's **FORESTS, WETLANDS, AND OTHER NATURAL RESOURCES ACT AS NATURAL INFRASTRUCTURE**, mitigating and protecting us against extreme weather and changing weather patterns.

3/
UNSUSTAINABLE PRACTICES related to tourism, industrial-scale activities, and over-development **PUT NATURAL RESOURCES UNDER CONTINUED STRESS**.

EMERGING THEMES

FARM AND FARMLAND

1/

LAND VALUE appreciation and inflation heightens stress on farms and farmland.

2/

Lower agricultural production combined with high farmland **MAINTENANCE COSTS** put economic additional pressure on farmland owners.

UTILITIES & INFRASTRUCTURE

1/

PUBLIC SAFETY in Sullivan County is threatened by a lack of consistent access to **ELECTRICITY, CELLULAR SERVICE, and BROADBAND INTERNET**

2/

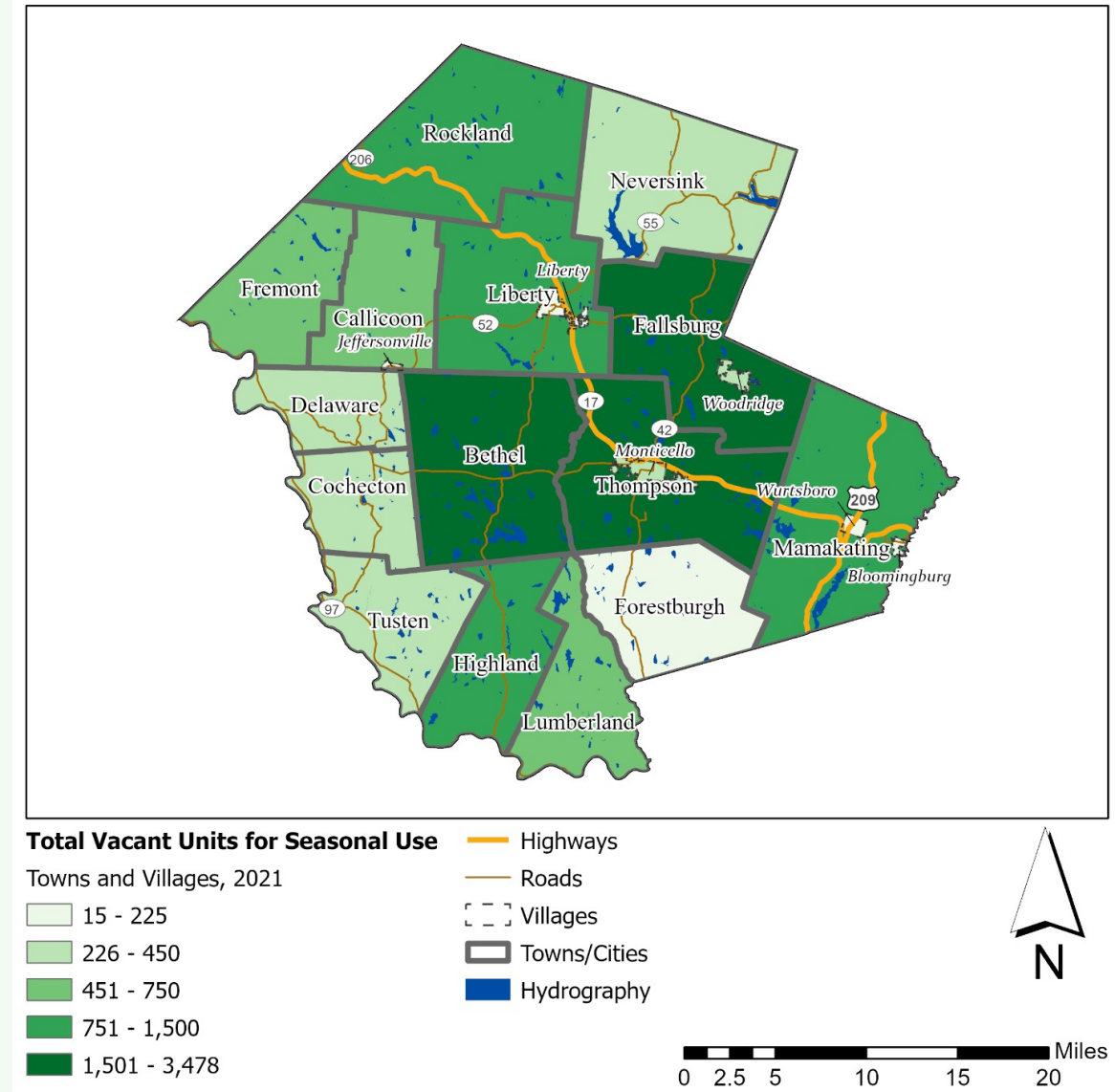
POPULATION GROWTH and **CHANGING WEATHER PATTERNS** threaten the existing capacity of **WASTE** and **WATER SYSTEMS** in Sullivan County

RECOMMENDATIONS

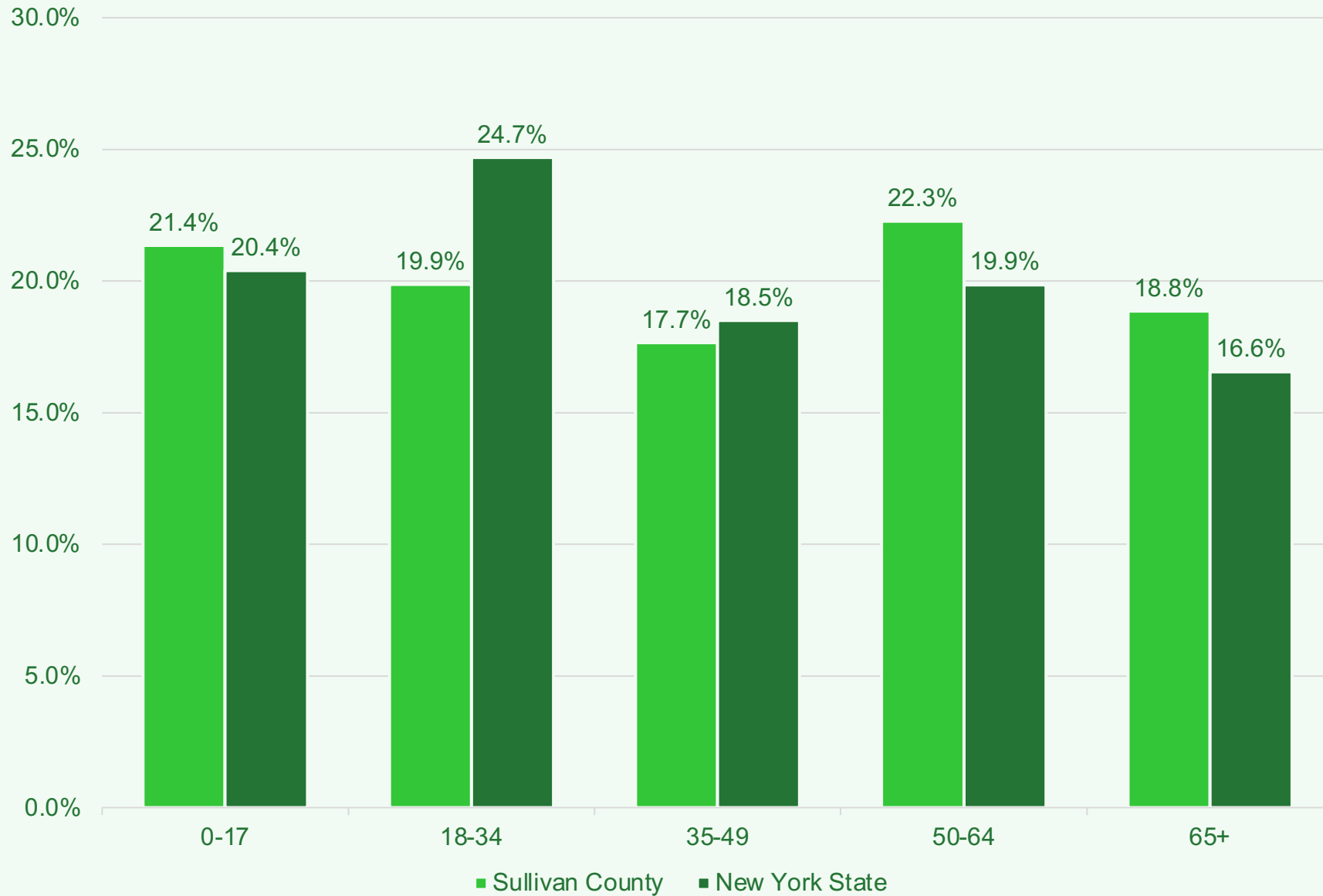
HOUSING

ISSUES & OPPORTUNITIES

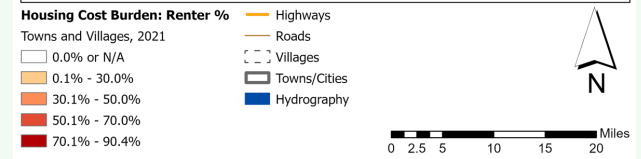
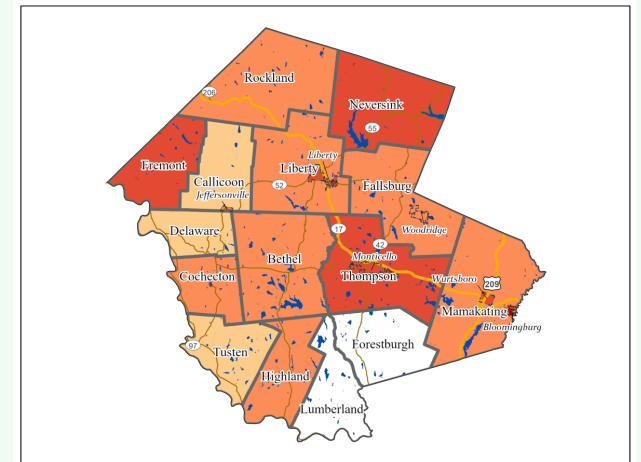
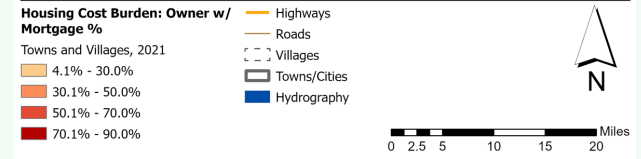
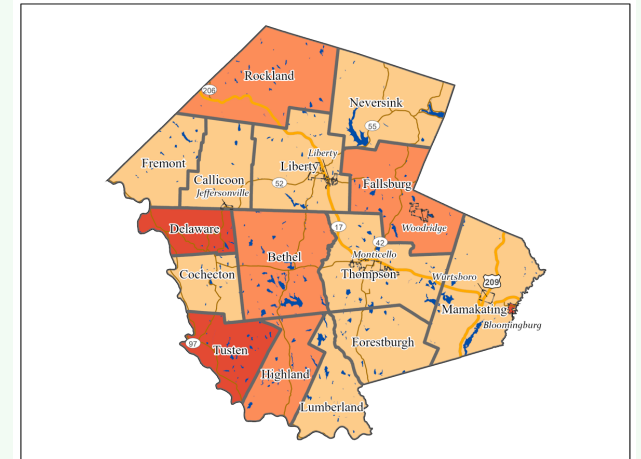
- 28,816 households in Sullivan County
- 15,904 residential units reserved for seasonal use
- High rates of housing burden (paying more than 30% of income for housing)
 - 48% of renters are burdened
 - 27.4% of owners with a mortgage are burdened
 - 22.1% of owners without a mortgage are burdened



POPULATION: AGE



HOUSING BURDEN



GOAL

1/ HOUSING

Ensure housing availability and affordability by supporting strategic growth in Sullivan County that avoids sprawl and promotes safe, walkable communities.

STRATEGIES

Expand affordable housing/infill/rehab projects/address blighted properties.

- Build on 2022 Housing Strategy.
- Expand RUPCO partnership.
- Seek out CDBG funding to support housing development.

Build/renovate to Living Building or Enterprise Green standards for health and climate resiliency.

- Land Bank Sustainable Construction Policy.
- Create toolkit for communities wishing to include green standards in their building codes.

Improve neighborhood amenities for safe outdoor activities/walking.

- Safe Streets/Safe Routes to School technical assistance to towns and villages
- Bike & Ped Master Plan to examine potential for pedestrian and bike paths along county roads and properties

GOAL

1/ HOUSING

Ensure housing availability and affordability by supporting strategic growth in Sullivan County that avoids sprawl and promotes safe, walkable communities.

STRATEGIES

Address need for Air Conditioning in anticipation of near future heat events.

- Incorporate cooling centers in new facilities and renovations.
- Support EE retrofits and ASHP installations.
- Consider cross training to enable home health workers to refer residents for EE retrofits and AC programs.

Address homeless/interim housing.

- Gateway shelter project
- Identify sustainable funding sources for long-term action

FARMING AND FARMLAND

ISSUES & OPPORTUNITIES

- Local farms have been increasing in number and size since 2007, but:
 - Livestock/Poultry sales are down
 - Crop sales are increasing but not making up for recent losses
- Forestry is often a secondary land use for farmers in Sullivan County
- Many municipalities in Sullivan County maintain “right to farm” laws
- Recent agriculture & farmland protection plan have achieved much success



FARMING AND FARMLAND

CHALLENGES

- Dairy & beef farms were traditionally the focus of local farm production but are in long-term decline
- Small average farm size due to difficult terrain
- Invasive species
- Depletion of soil quality due to erosion and over-farming
- Aging workforce & lack of succession planning



2/ FARMING AND FARMLAND

Ensure the economic viability of farmland conservation by supporting farmland owners, and agriculture and associated activities.

Promote/support succession plans for farmers who are retiring/match with young farmers.

- Outreach to farmers on succession planning
- Establish a fund to compensate farmers for the gap between agricultural vs. other use sale of their properties.

Expand farm apprenticeships.

- Work with New York State, the Cornell Cooperative and other regional and non-regional resources to support and facilitate access to education and apprenticeship programs.
- Utilize resources such as the Hudson Valley Apprenticeship Program Plan and SARE Farm-Mentor Toolkit to development meaningful mentorship programs with professional development trajectories.

Address the housing needs of beginning farmers and farm workers.

- Assist farmers in applying for NYS Farmworker Housing Program loans to purchase, construct, or improve farmworker housing.

GOAL

2/ FARMING AND FARMLAND

Ensure the economic viability of farmland conservation by supporting farmland owners, and agriculture and associated activities.

STRATEGIES

Support Farmers' Markets, Farm to Table and Buy Local initiatives and efforts to connect residents with the value of local agriculture.

- Continue to support the Cornell Cooperative Sullivan County Buy Local initiatives such as the Farmers Market promotion project, Farm to Institution planning, and Sullivan Fresh, Pure Catskills, etc. through monetary, marketing and other in-kind efforts.

Create conservation easements.

- Protect the agricultural viability and enhance and restore wetlands by limiting nonagricultural uses which negatively affect agricultural uses.

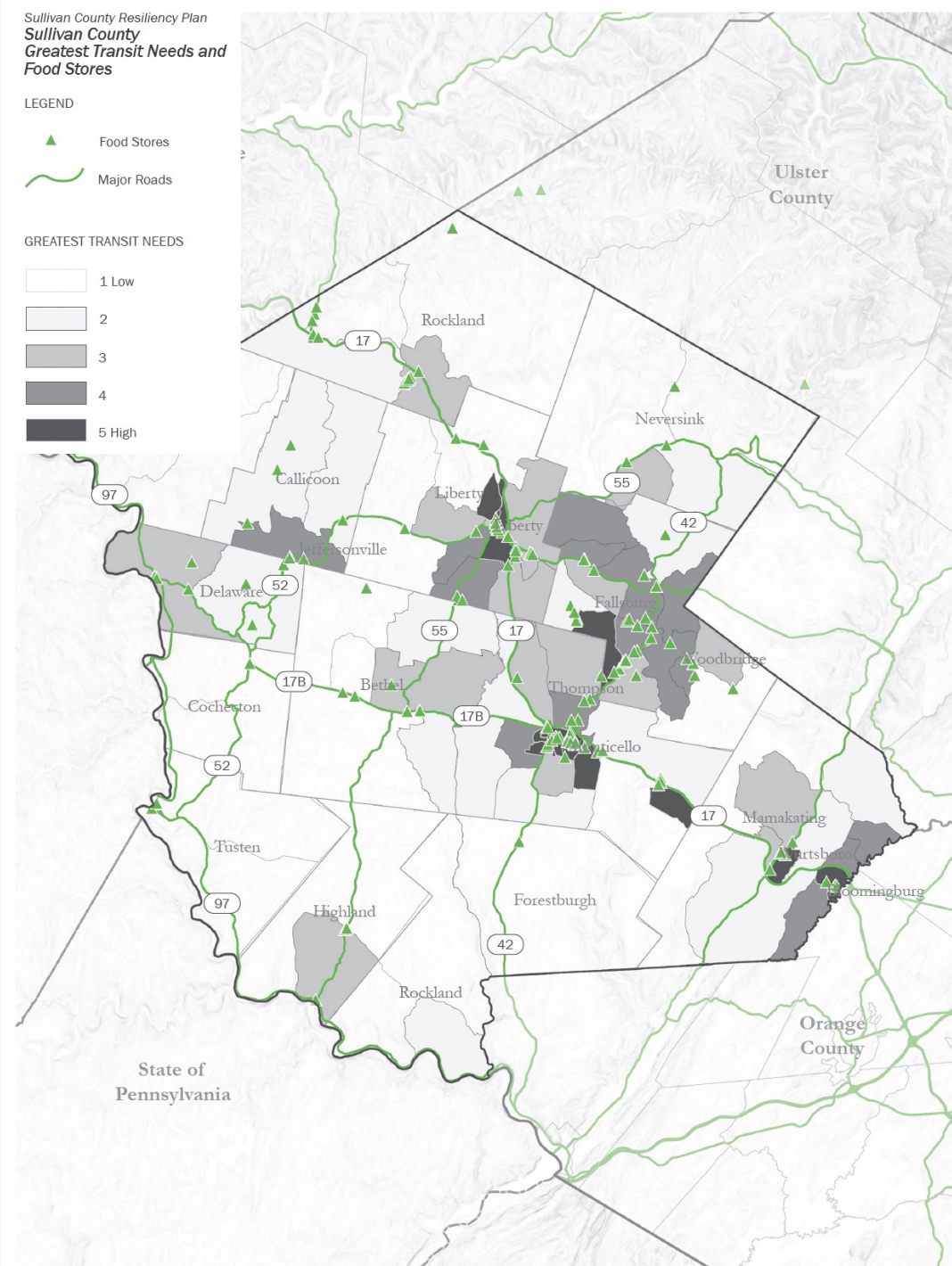
Anticipate climate-related vulnerabilities and opportunities.

- Continue to support Cornell Cooperative work on methods/investments to compensate for growing season changes.
- Create fund to compensate for farm-site environmental conservation activities.

FOOD, JOBS & SERVICES

CHALLENGES

- Automobile Reliance
 - 86.9% of residents drive to work
 - 9% of residents do not have car access (ACS 2020)
- Increased flooding disrupts road access
 - Route 17 corridor (Rockland, Thompson, Mamakating)
 - Route 52 corridor (Callicoon, Liberty)
- Just 2 medical centers (169 beds)
 - No trauma center
 - EMT & Fire Department reliance on volunteers
 - Opioid Crisis
- Transit needs are highest in Liberty, Fallsburg, Thompson, and Mamakating



FOOD, JOBS & SERVICES

OPPORTUNITIES

- While **MOVE SULLIVAN** provides an important public transit service to many in the county, it can still be expanded to include additional healthcare, food and social service resources.
- Recent increases in public works funding has allowed the county to keep up with road repairs, but many bridges in the county need replacement.



GOAL

3/ FOOD, JOBS, HEALTH AND SERVICES

Improve access to healthy food, healthcare, jobs, and emergency services.

STRATEGIES

Address food deserts and food insecurity.

- Develop an inventory of food sources including farmers' markets, supermarkets, and existing food delivery programs run by local non-profits.
- Apply for funding to expand food delivery to vulnerable populations, and areas in food deserts.
- Strengthen public / micro transportation networks to increase access to food sources.

Improve delivery of emergency services/recruitment needs for local fire & ambulance corps, perhaps among 2nd homeowners.

Address mental health needs and opioid response.

3/ FOOD, JOBS, HEALTH AND SERVICES

Improve access to healthy food, healthcare, jobs, and emergency services.

Improve access to childcare to facilitate workforce availability.

- Identify childcare deserts
- Support and formalize family, friend and neighbor (FFN) childcare by providing technical assistance for small providers to access formal licensing and remove barriers to entry.
- Seek out funding for childcare facilities and facility development programs.

Expand transportation options/ridesharing to facilitate employment.

- Map all modes of transportation in relation to key local destinations.
- Develop last-mile or “last few miles” network from key transit locations and ride-sharing locations.
- Apply for funds to support and expand micro-mobility network and infrastructure.

Explore Healthy Home interventions to correct housing conditions that contribute to poor health: mold, lead, poor ventilation, malfunctioning combustion appliances.

- Apply for HUD Healthy Homes Initiative funding Follow Healthy Homes Demonstration Action template:
- Develop low-cost methods for hazard assessment and intervention
- Build local capacity to educate residents and mitigate hazards
- Develop/deliver public-education programs

UTILITIES / THREATS

- Frequent power outages:
 - Tree contacts
 - Aging infrastructure
 - Capacity issues
- Cell phone dead zones:
 - Cell tower regulations along Delaware River Valley
- Gaps in internet coverage:
 - Reliance for remote work

- Water infrastructure:
 - Mix of municipal and private systems
 - Fluctuating water table
 - Aging infrastructure
- Solid waste:
 - Distance of landfill
 - Seneca Meadows Landfill closure in 2025
 - Lack of organic waste practices

- Significant seasonal population change
 - 79,806 Year-round residents
 - 300-350,000 residents at peak over Memorial Day weekend
- Growing year-round population
- Changing weather patterns

UTILITIES

OPPORTUNITIES

- Public and Private investments are underway for **WIRELESS BROADBAND** to improve internet access across the county.
- Options are currently being considered to meet Sullivan County's **MUNICIPAL SOLID WASTE BURDEN**.
- NYSEG has taken steps to address these issues, including the **YULAN 204 CIRCUIT UPGRADE** and updated **VEGETATION MANAGEMENT** practices.



GOAL

4/ UTILITIES

Ensure access to quality and reliable electrical, telecommunications, and internet utilities throughout the County, and prepare for emerging challenges by modernizing both water and solid waste infrastructure.

STRATEGIES

Examine grid reliability for anticipated demand relating to electrification/AC and other climate issues.

- Address dual challenge of short-term power outages and long-term resilience issues of energy infrastructure.
- Infrastructure replacement/repair; Renewable energy integration

Support beneficial electrification of County facilities.

- Electrification of heating systems, appliances.
- Renewable energy integration
- Public education

Address need for alternatives for County solid waste options with closure of Seneca Meadows.

- County services: Recycling, composting
- Waste reduction
- Seneca Meadows determination

Build on the extensive ad hoc communications and distribution networks created during Covid.

- Continue to support broadband initiatives.
- Infrastructure planning and technologies that maximize coverage.
- Upper Delaware Council (UDC) policy

GOAL

4/ UTILITIES

Ensure access to quality and reliable electrical, telecommunications, and internet utilities throughout the County, and prepare for emerging challenges by modernizing both water and solid waste infrastructure.

STRATEGIES

Continue to support and update key climate resiliency plans including the SC Hazard Mitigation Plan and the Comprehensive Emergency Management Plan.

Install EV charging network for County fleet, public transit routes and the public.

- Install at county facilities
- EV charging hub access
- Phase upgrade to county fleets
- Component of tourism and economic development

Update and expand municipal and private water and wastewater infrastructure to support economic development based on smart growth principles.

NATURAL RESOURCES AND INFRASTRUCTURE

BENEFITS

- Economic Benefits
 - Tourism Industry
 - Aquatic Recreation
 - Fly Fishing
 - Hunting
 - Protected Land
 - Seasonal Residents
- Infrastructural Benefits
 - Stormwater Management
 - Air Quality Benefits
 - Surface & Groundwater Filtration
 - Carbon Sequestration
 - Biodiverse Habitat



Image Source: Payne's Water Sports

NATURAL RESOURCES AND INFRASTRUCTURE



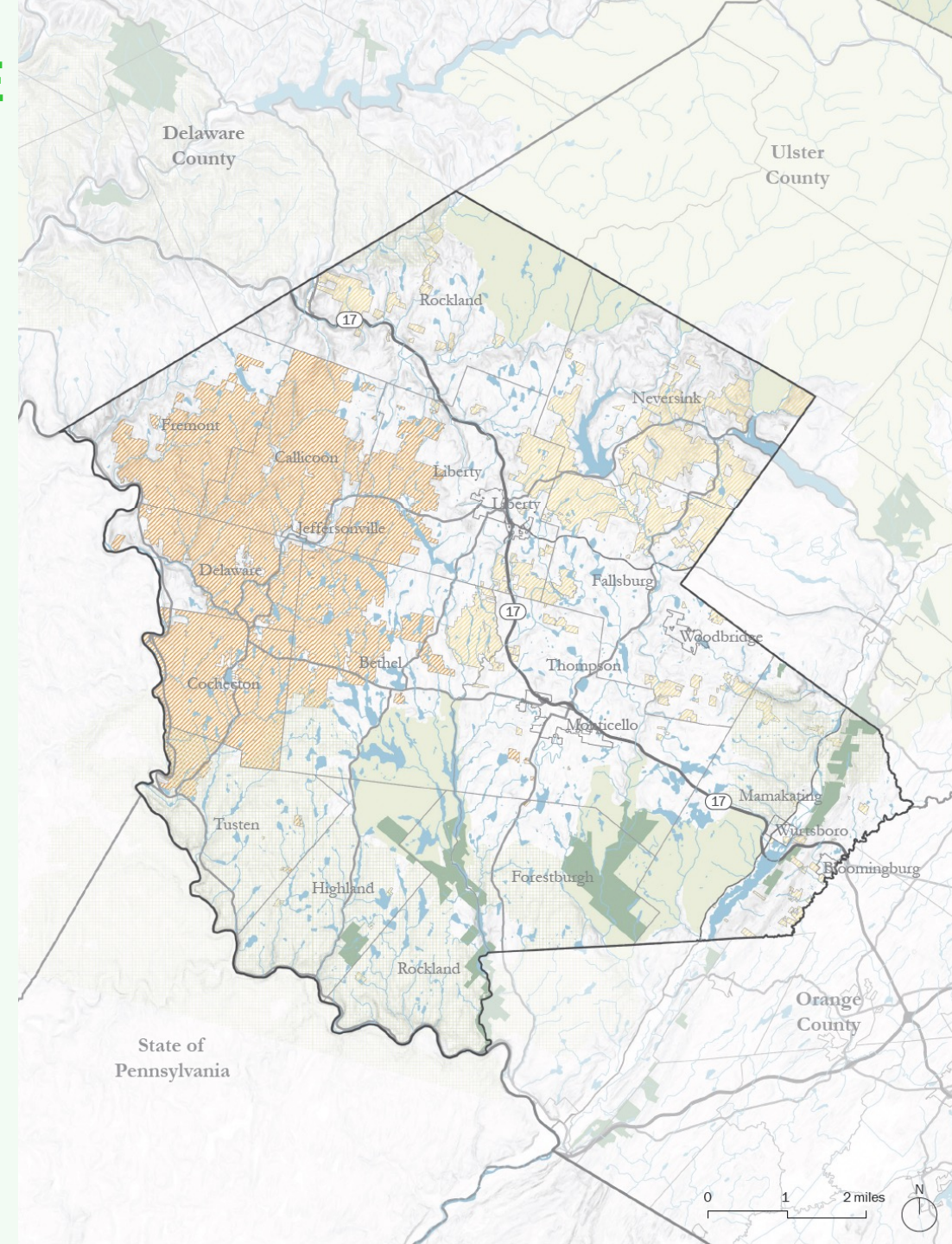
THREATS

- Invasive Species
- Changing Weather Patterns
- Real Estate Pressure
 - 83% of land is privately owned
 - Sullivan County is projected to lose 3,100 acres of cropland by 2040 (American Farmland Trust)
- Forest Fragmentation
- Destruction of Riparian Zones
- Algal Blooms
- Pollution

NATURAL RESOURCES & INFRASTRUCTURE

OPPORTUNITIES

- More than **30,000 ACRES** of forest in Sullivan County are in the **TOP 1%** of forests in the region for their size, connectedness, habitat diversity, and ability to sequester carbon.
- **CONSERVATION EASEMENTS** provide **TAX INCENTIVES** for private conservation of land.
- **COMPREHENSIVE PLANNING** and **CONSERVATION ZONING** are tools municipalities have used take to protect their natural resources.



GOAL

5/ NATURAL RESOURCES

Recognize and protect the role of natural resources both as an economic driver and ecological infrastructure in Sullivan County.

Create a natural resources inventory.

- Work with organizations such as the Hudsonia to develop and geo-locate a natural resource inventory in coordination with local farmers, non-profits and ecological scientists.

STRATEGIES

Implement flood control/anticipate increased rainfall/extreme storms at specific locations such as White Lake.

Educate the public about the ecological and recreational value of resources through interpretive signage and other programs.

- Develop an educational tool-kit for the general public to educate them about ecological services and how they can protect the provided by Sullivan County's natural resources.

Develop interpretive signage and informational events at recreational sites to highlight environmental features and the value of ecological services.

GOAL

5/ NATURAL RESOURCES

Recognize and protect the role of natural resources both as an economic driver and ecological infrastructure in Sullivan County.

ID areas where flooding, heat, wind, wildfires and extreme storms pose threats.

Address invasive pests like woolly adelgid, lanternfly, Canada geese.

Coordinate infrastructure decisions with conservation priorities.

Promote trails and parks by engaging schools for recreation and outdoor education.

STRATEGIES

FIND THIS PRESENTATION ON

www.resilientsullivan.com
