

Village of Monticello: Resiliency Fact Sheet

Demographic Key Points

6,429 residents of Monticello
8.5% of County population
~80% residents do not speak English at home

Linguistic Characteristics

In Monticello, one in five residents (1,285), speak a language other than English at home. Spanish is spoken by more than 1000 residents.

Housing

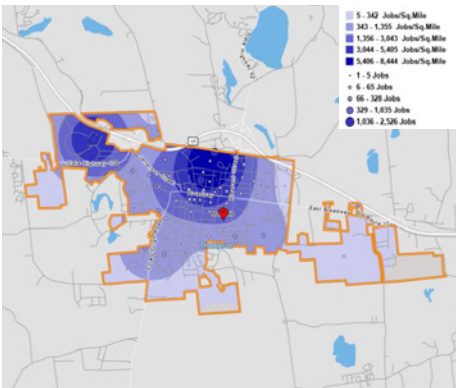
3,044 housing units in Monticello
~50% multi-family structures
23.7% housing stock vacant for seasonal use
700 incoming housing units in 3 new approved apartment complexes

Housing Types

Nearly half of the housing units in Monticello are multifamily structures.

Employment + Labor Force

8000+ jobs in Monticello
2,941 jobs in Health Care
752 persons live and work in Monticello



Tourism + Outdoor Recreation

In 2019, **24.9%** of Monticello's jobs were in Arts, Entertainment, and Accommodations.

Key Employers

Garnet Health Medical Center - Catskills and the Resorts World Casino are the largest employers in the village.

Monticello is the resort center of Sullivan County with establishments as listed.

- Nesin Culture Arts
- Beer World
- Top Golf Swing Suite
- Monster Golf Course @ Resorts World Catskills
- Resorts World Catskills
- Holiday Mountain Action Sports
- Holiday Mountain Ski & Fun Park
- Monticello Motor Club
- Monticello Raceway
- The Katrite Resort & Indoor Waterpark
- Town of Thompson Park
- Starlight Marina
- Crystal Life Spa
- YO1 Health Resort

Risks and Vulnerable Locations

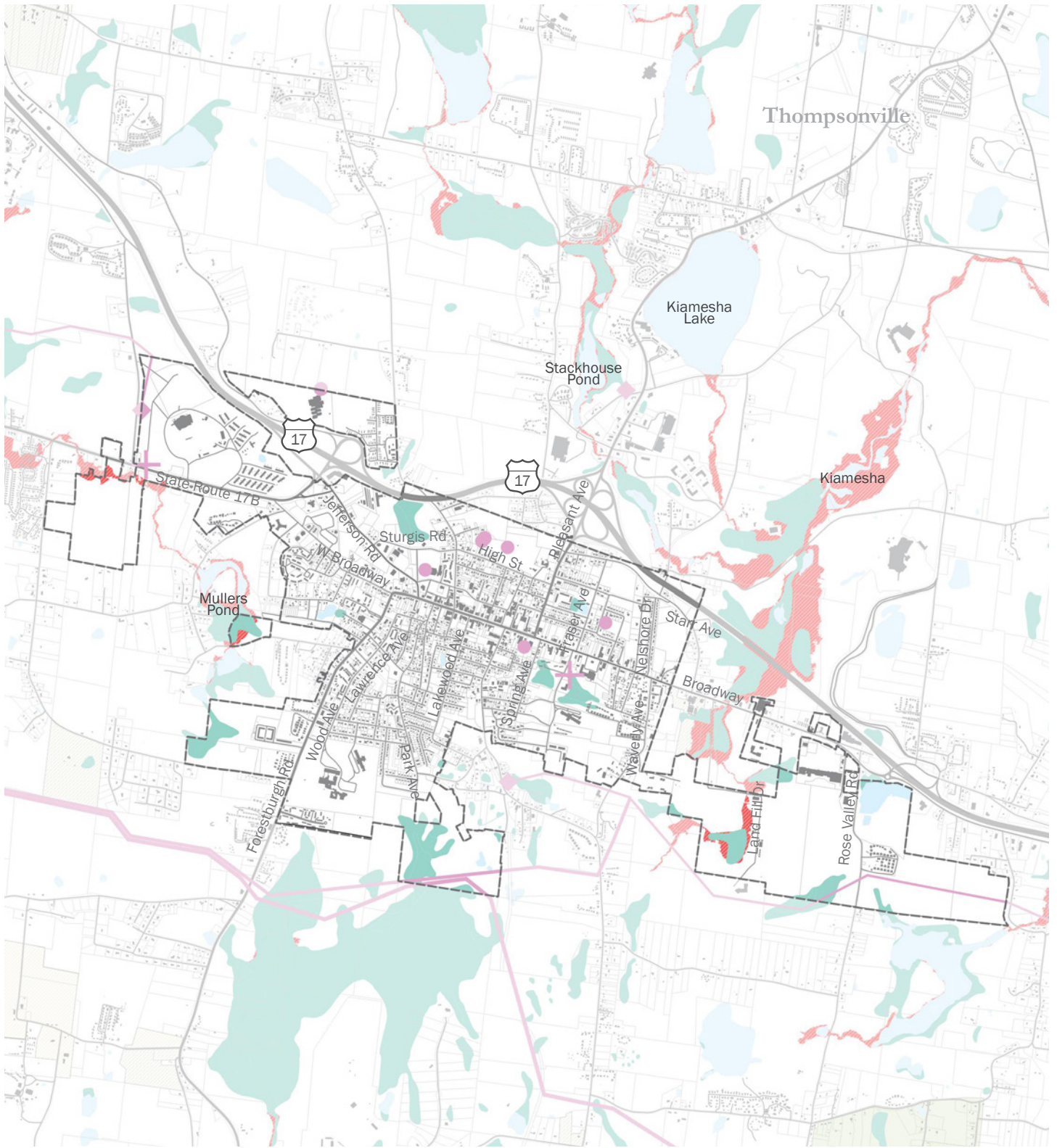
- 1** flooding
- 2** wind
- 3** snow storm
- 4** ice storm

Select Vulnerable Locations

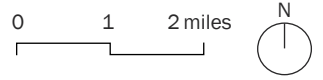
- Local streets and Route 97, running adjacent with the Delaware River, experience significant flooding

Flooding

169 or 9.25% at flood risk







Sullivan County Resiliency Plan
Village of Monticello



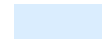



FORESTS AND AGRICULTURE

-  Matrix Forest Blocks
-  Agricultural District 4

INFRASTRUCTURE

-  Linear Energy Infrastructure
-  Energy Infrastructure
-  Medical Facilities
-  Telecommunications Infrastructure

WATER

-  Waterbodies
-  Streams / Tributaries
-  Wetlands
-  Flood Zones A, AE, and X500