

# Town of Delaware: Resiliency Fact Sheet

## Demographic Key Points

**2,574** residents of Delaware

**3.4%** of County population

**20.4%** residents over age 65

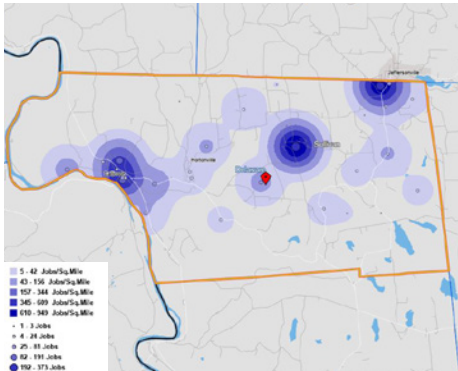
## Housing

**1,142** housing units in Delaware

**20.5%** multifamily homes in Delaware

**9.3%** multifamily homes in Sullivan County

## Employment + Labor Force



**1,276** jobs in Delaware in 2019

**30.6%** of jobs in Accommodations and Food Service

**223** persons live and work in Bethel

### Household Characteristics

42% of the Town's 1,142 households are single person. Only 18% of households have Children under the age of 18, compared to 29.6% of Sullivan County households.

### Housing Structures Vulnerability

There are only 43 housing units in Delaware that are classified as "Other" structures, i.e., mobile homes or trailers. These units are particularly vulnerable to severe weather events.

## Agriculture

### Right-to-Farm

Delaware is one of the 11 municipalities in Sullivan County that has enacted a "Right to Farm" law. Much of Cocheton's land area falls with NYS Agricultural District #1.

### Agricultural Resources

- Callicoon Farmers' Market
- Apple Pond Farm
- Little Woods Farm
- Wild Russet Farm
- Will Hugh Farm
- Diehl Homestead Farm

## Tourism + Outdoor Recreation

There are several tourism and outdoor recreation opportunities in Delaware ranging from theater and art to stops on the Wine & Spirits Trail, to more active options including horseback riding and rafting.

### Tourism Resources

- The Callicoon Theater
- The Janice Center
- Georgia Chambers Studio and Art Gallery
- Callicoon Brewing Co
- Honey Hill Pottery
- Catskill Provisions
- Diehl Me In Performance Horse riding school
- Villa Roma Resort & Conference Center
- Flex Appeal at Villa Roma
- Villa Roma Saddle Club
- Stone Arch Bridge Historical Park
- Machne Bnos Satmar children's camp

## Risks and Vulnerable Locations

**1** flooding

**2** ice storm

**3** snow storm

**4** wind

**5** landslide

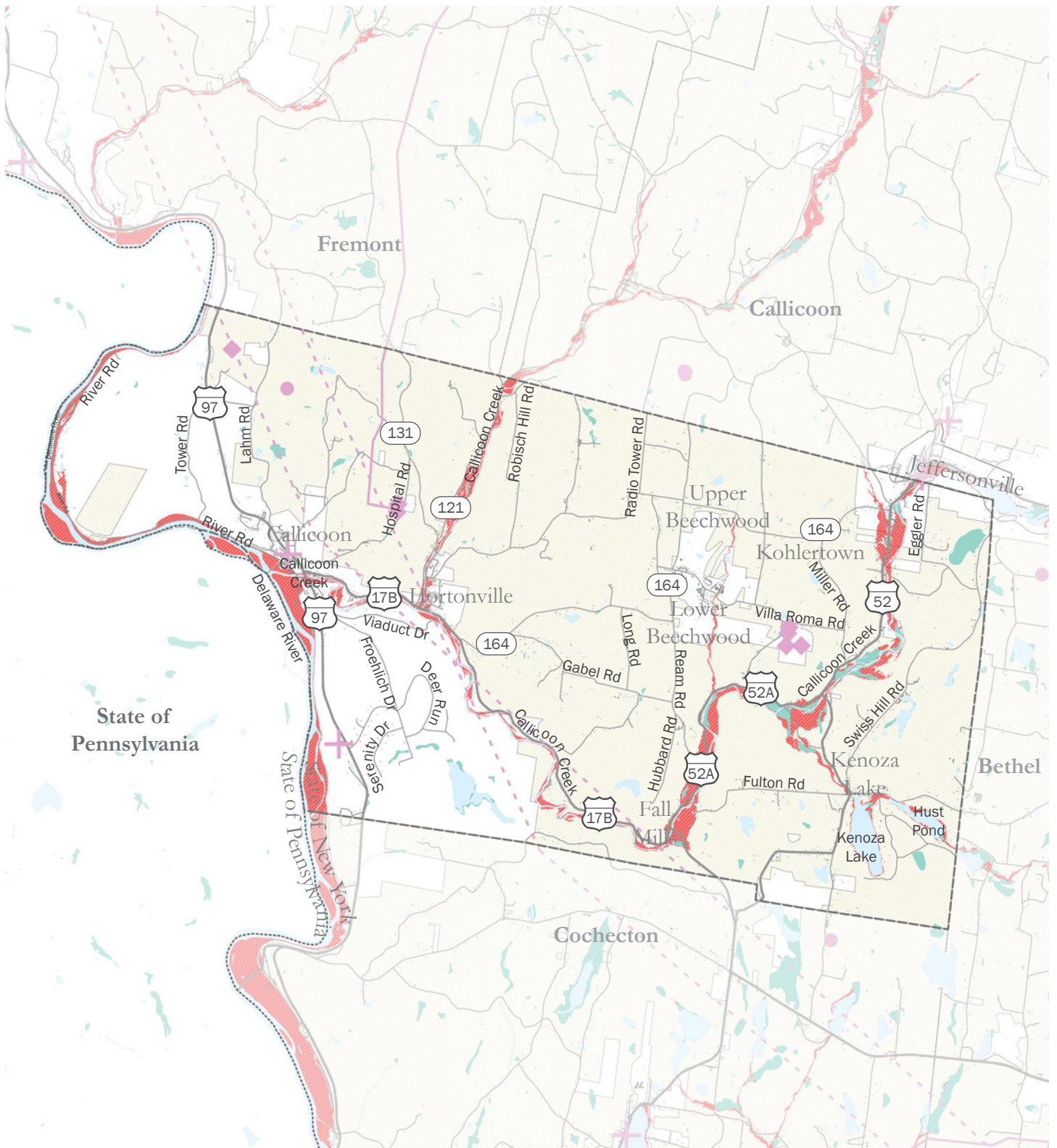
**6** wildfire

### Select Vulnerable Locations

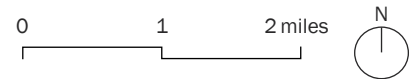
- State Route 52 in Kohlertown, experiences severe flooding on a continuous basis
- Main St/Beechwood Rd, CR 164 and CR 52 have flooding issues
- Old sewage treatment plant is currently located in the floodplain

## Flooding

**679** or 20.7% properties at flood risk



Sullivan County Resiliency Plan  
**Town of Delaware**



**INFRASTRUCTURE**

- Linear Energy Infrastructure
- Energy Infrastructure
- Medical Facilities
- Telecommunications Infrastructure

**WATER**

- Waterbodies
- Streams / Tributaries
- Wetlands
- Flood Zones A, AE, and X500

**AGRICULTURE**

- Agricultural District 1