

# Village of Wurtsboro: Resiliency Fact Sheet

## Demographic Key Points

**1,014** residents of Wurtsboro

**1.3%** of County population

**~25%** residents above age 65

### Household Characteristics

Average household size for the Village's 427 households is 2.37, lower than the county average of 2.62.

## Housing

**521** housing units in Wurtsboro

**18%** housing stock vacant for seasonal use in Wurtsboro

**43.6%** housing stock vacant for seasonal use in County

### Rent Burdened Residents

Rents are particularly out of sync with local wages as 56.6% of renters are paying more than 30% of income on rents; and 4 out of 5 of those are paying more than 50% of income to rents.

## Employment + Labor Force

**222** jobs in Wurtsboro in 2019

**9** persons live and work in Wurtsboro

Wurtsboro is a business center in Sullivan County. The largest share of employment in 2019, was in Professional, Scientific, and Technical Services (28.4%), followed by Administration and Support Services & Waste Management (23%). In Sullivan County as a whole, only 1.3% of jobs are in Professional, Scientific, and Technical Services and 3.1% in Administration & Support.

## Business

There is a healthy diversity of year round business services in Wurtsboro ranging from accountants to architects to security services. Retail options range from Harley-Davidson motorcycles to florists as well as a number of restaurants, particularly along Sullivan Street.

## Risks and Vulnerable Locations

**1** flooding

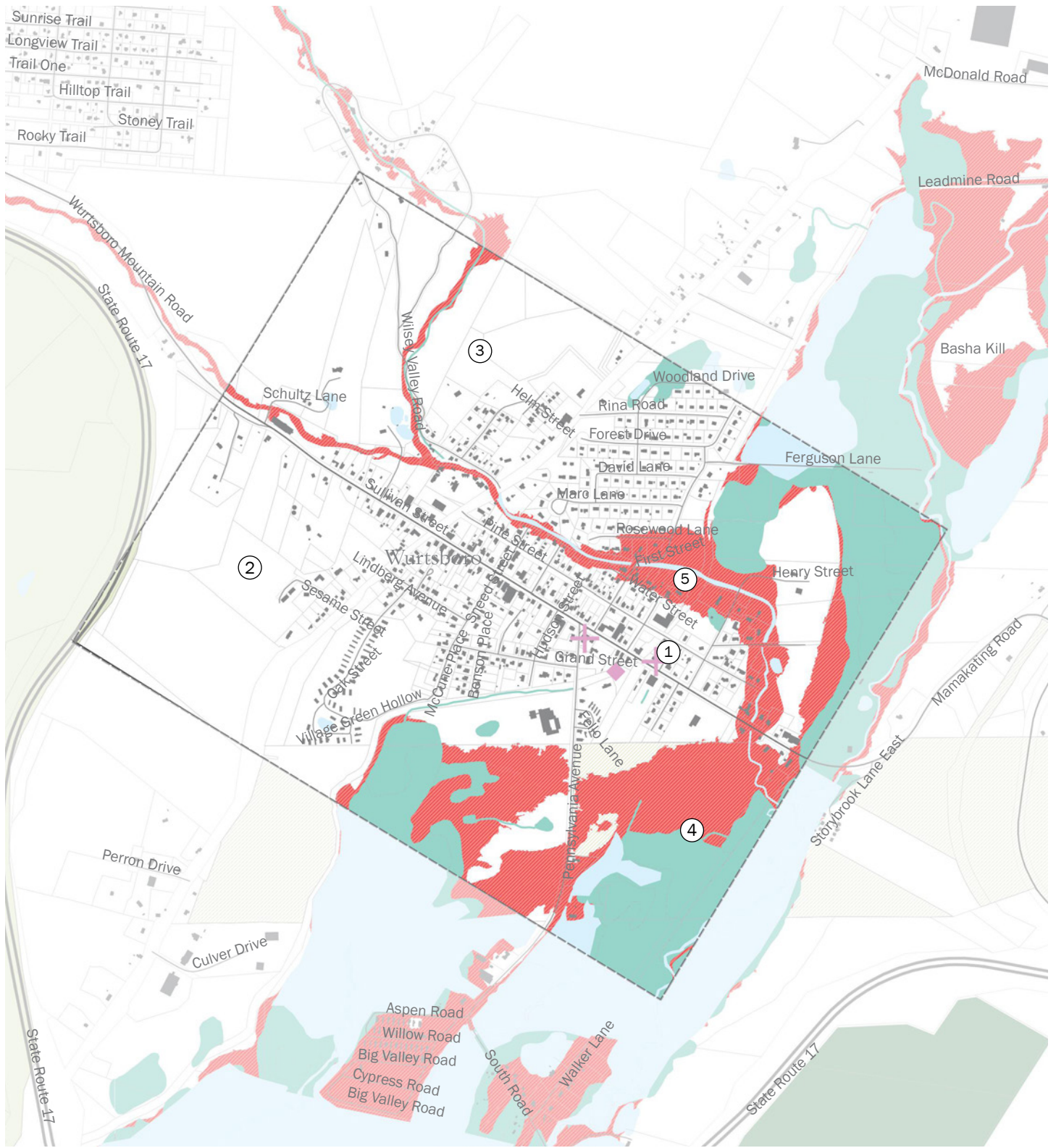
**2** wind

**3** snow storm

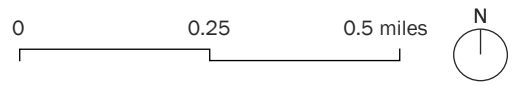
**4** ice storm

### Select Vulnerable Locations

- Canal St experiences consistent flooding
- Wilsey Brook area flooding near storm drain due to debris accumulation



Sullivan County Resiliency Plan  
**Village of Wurtsboro**



**FORESTS**

- Matrix Forest Blocks
- DEC Forest Lands

**INFRASTRUCTURE**

- Linear Energy Infrastructure
- Energy Infrastructure
- Medical Facilities
- Telecommunications Infrastructure

**WATER**

- Waterbodies
- Streams / Tributaries
- Wetlands
- Flood Zones A, AE, and X500