

Town of Lumberland: Resiliency Fact Sheet

Demographic Key Points

2,253 residents of Lumberland
2.9% of County population
62.9% residents at working age 18 to 64

Household Characteristics

Lumberland has a significant share of larger households with 12.2% having 5 or more residents, compared to only 8.9% of County Households.

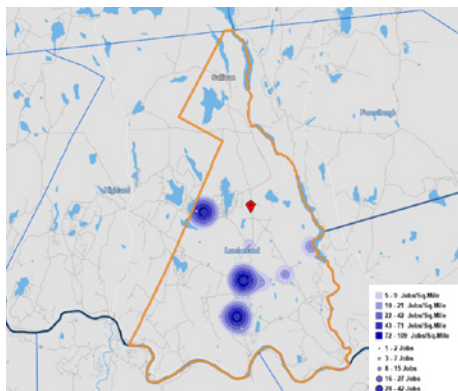
Housing

1,498 housing units in Lumberland
85 housing units classified as "Other" structures
46.3% housing stock vacant for seasonal use

Housing Structures Vulnerability

Housing units that are classified as "Other" structures, i.e., mobile homes or trailers. These units are particularly vulnerable to severe weather events.

Employment + Labor Force



149 jobs in Lumberland in 2019
28.2% of jobs in Public Administration
40.9% persons live and work in Lumberland

Tourism + Outdoor Recreation

There are several tourism and outdoor recreation opportunities in Lumberland ranging from retreats and resorts to more active options including whitewater rafting.

Household Characteristics

- Kadampa Meditation Center
- Mongaup Whitewater Launch
- Camp Simcha
- Camp Lokanda
- Camp Teumim
- Mohican Lake Resort
- Lake Champion –a Young Life Camp

Risks and Vulnerable Locations

1 flooding
2 wind
3 snow storm
4 ice storm
5 lightning
6 tornado

Select Vulnerable Locations

- Rio Dam failure potential
- Local streets and Route 97, running adjacent with the Delaware River, experience significant flooding
- McKenzie Elementary in Glen Spey has no backup generator

Flooding

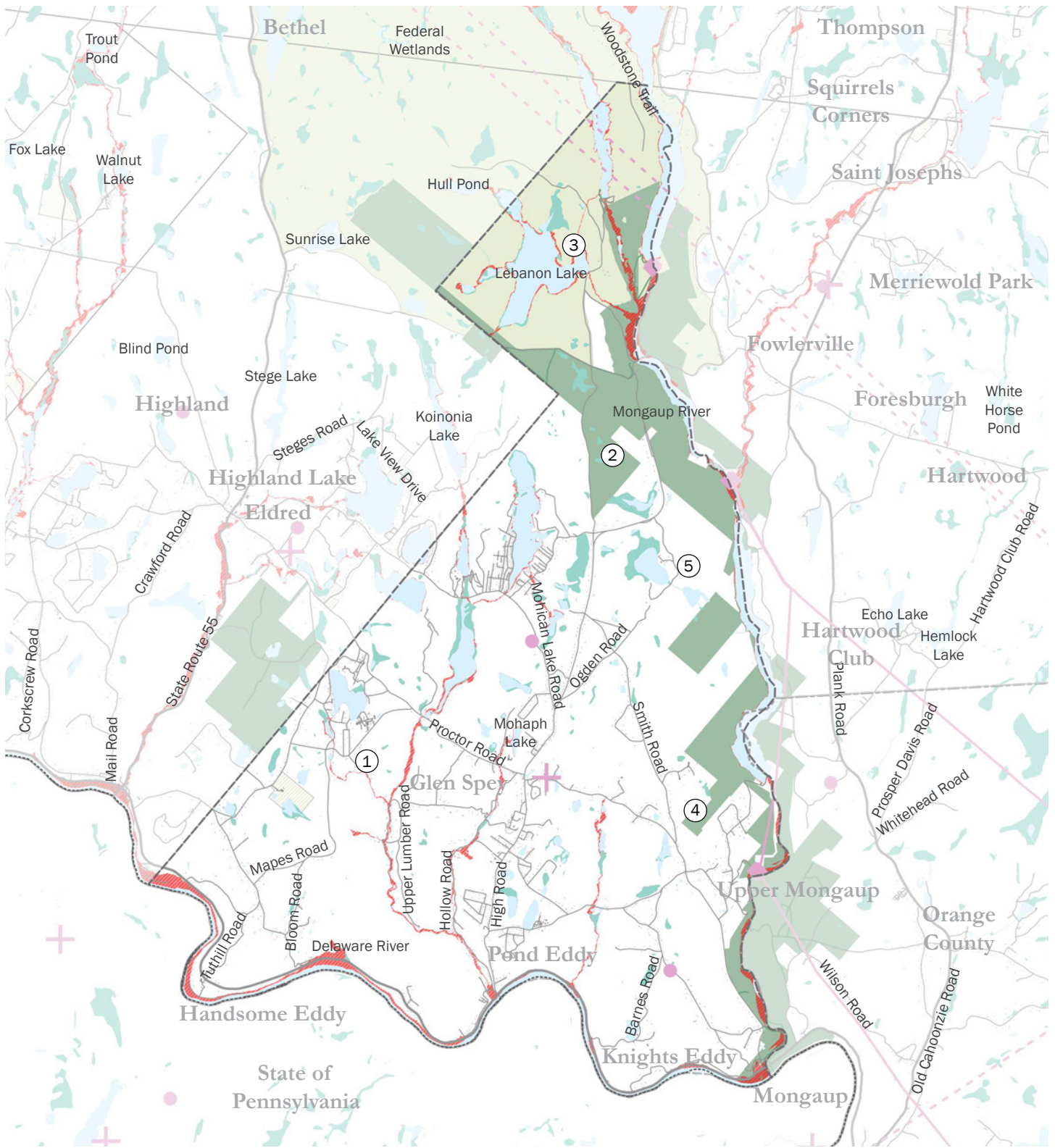
302 or 9.2% properties at flood risk

Water

5 major unconsolidated principal aquifer areas
4 watersheds in Lumberland

Watersheds

The Town of Mamakating is drained by 4 watersheds: Homowack Kill and Sandburg Creek, the Shawangunk Kill, the Basher Kill, and the Neversink River.



Sullivan County Resiliency Plan
Town of Lumberland

- FORESTS AND AGRICULTURE**
- Matrix Forest Blocks
 - DEC Forest Lands
 - DEC Trails
 - Agricultural District 1

- INFRASTRUCTURE**
- Linear Energy Infrastructure
 - Energy Infrastructure
 - Medical Facilities
 - Telecommunications Infrastructure

- WATER**
- Waterbodies
 - Streams / Tributaries
 - Wetlands
 - Flood Zones A, AE, and X500

