

# Village of Woodridge: Resiliency Fact Sheet

## Demographic Key Points

**818** residents of Woodridge

**1.1%** of County population

**21.1%** Black, African American, and Asian residents

### Household Characteristics

A full 50% of the Village's 312 households are single person; while 27.9% of households have children under the age of 18, compared to 29.6% of Sullivan County households.

## Housing

**797** housing units in Bethel

**61.5%** households are renters

**60.9%** housing stock vacant for seasonal use

### Renter Households

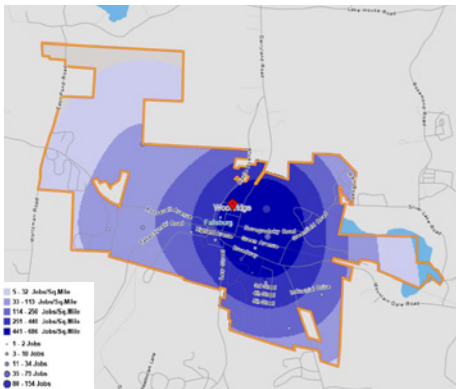
Roughly 40.6% of renters, 51.1% of owners with mortgages and 1.4% of owners without mortgages are cost-burdened, meaning that more than 30% of household income goes to rent or mortgage payments, leaving little extra money to respond to emergencies.

## Employment + Labor Force

**319** jobs in Woodridge in 2019

**34.6%** of jobs in Manufacturing

**10%** of County real estate jobs in Woodridge



## Tourism + Outdoor Recreation

As indicated by the large share of units vacant for seasonal use, Woodridge has a significant seasonal economy. Located on Silver Lake and with recreational assets like Krieger Park, the village is home to several camps and other assets, including those catering to the Orthodox community.

### Tourism Resources

- Woodlake Mens pool
- Camp Morris
- Lou Ann Bungalows
- Menorah Bungalow Colony
- The Weinberg Park
- Village Park Bungalow Colony

## Risks and Vulnerable Locations

**1** flooding

**2** wind

**3** snow storm

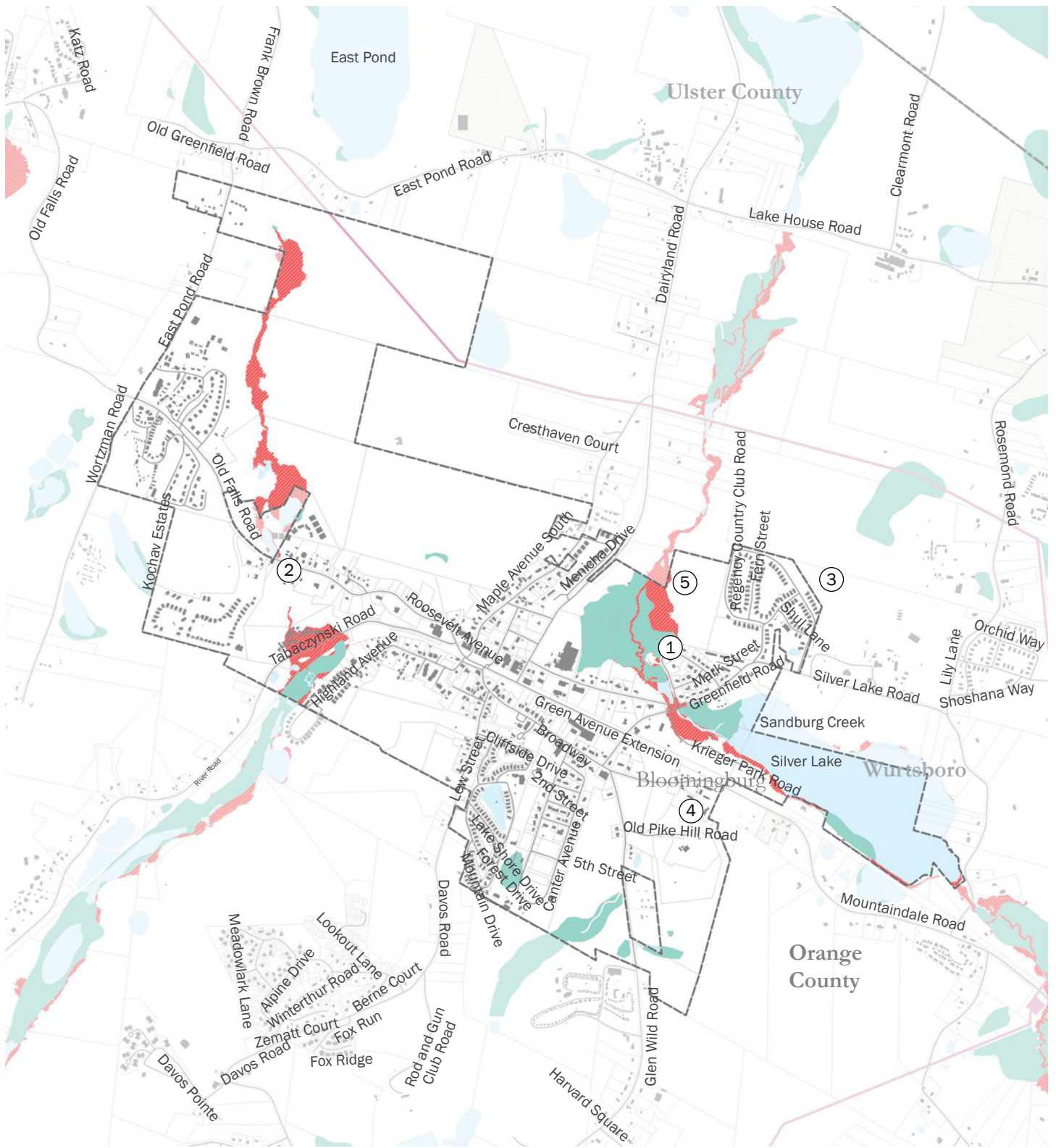
**4** ice storm

**5** cold wave

**6** lightning





### Select Vulnerable Locations

- Flooding on Tabaczynski Rd
- Lightning event (5 yrs ago) caused significant damage to water plant and equipment on premises
- Drainage and flooding issues on Maple Ave

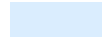





Sullivan County Resiliency Plan  
**Village of Woodridge**

INFRASTRUCTURE

-  Linear Energy Infrastructure
-  Energy Infrastructure
-  Medical Facilities
-  Telecommunications Infrastructure

WATER

-  Waterbodies
-  Streams / Tributaries
-  Wetlands
-  Flood Zones A, AE, and X500

AGRICULTURE

-  Agricultural District 4

