

# Town of Fallsburg: Resiliency Fact Sheet

## Demographic Key Points

**12,982** residents of Fallsburg

**17.2%** of County population

**25%** residents speak a non-English language at home

### Household Characteristics

32.5% of the Town's 4,468 households are single person. A slightly greater share, 33.0%, have children under the age of 18, compared to 29.6% of Sullivan County households.

## Housing

**8,899** housing units in Fallsburg

**1,013** housing units classified as "Other" structures

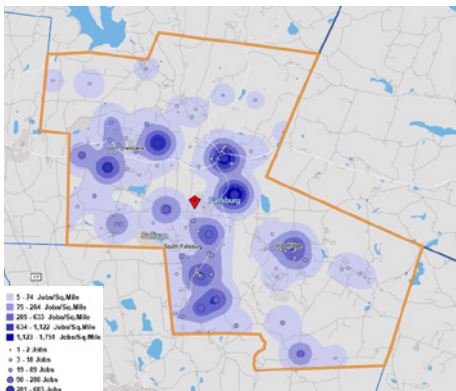
**49.8%** housing stock vacant for seasonal use

## Employment + Labor Force

**1,202** jobs in Fallsburg in 2019

**26.4%** of jobs in Public Administration

**1,023** persons live and work in Fallsburg



## Agriculture

**10** small horse farms in Fallsburg

**<5** large horse farms, small beef farms, and goat farms respectively

**12,769** acres of NYS Ag District 4 land in Fallsburg

**25%** of Town area part of NYS Ag District 1

### Right-to-Farm

Fallsburg is one of the 11 municipalities in Sullivan County that has enacted a "Right to Farm."

## Tourism + Outdoor Recreation

Fallsburg has significant tourism and outdoor recreation opportunities, including those that cater specifically to the Orthodox community.

### Tourism Resources

- Camp Shiloh
- Camp Mesivta D'Masmidim-Camp SilverLake
- Silver Lake Boat Launch
- Woodlake Men's Pool
- Menorah Bungalow Colony
- Village Park Bungalow Colony
- Highland Park Resort
- Satmar Girls Camp
- Morningside Park
- Lochmor Golf Course

## Risks and Vulnerable Locations

**1** flooding

**4** drought

**2** wind

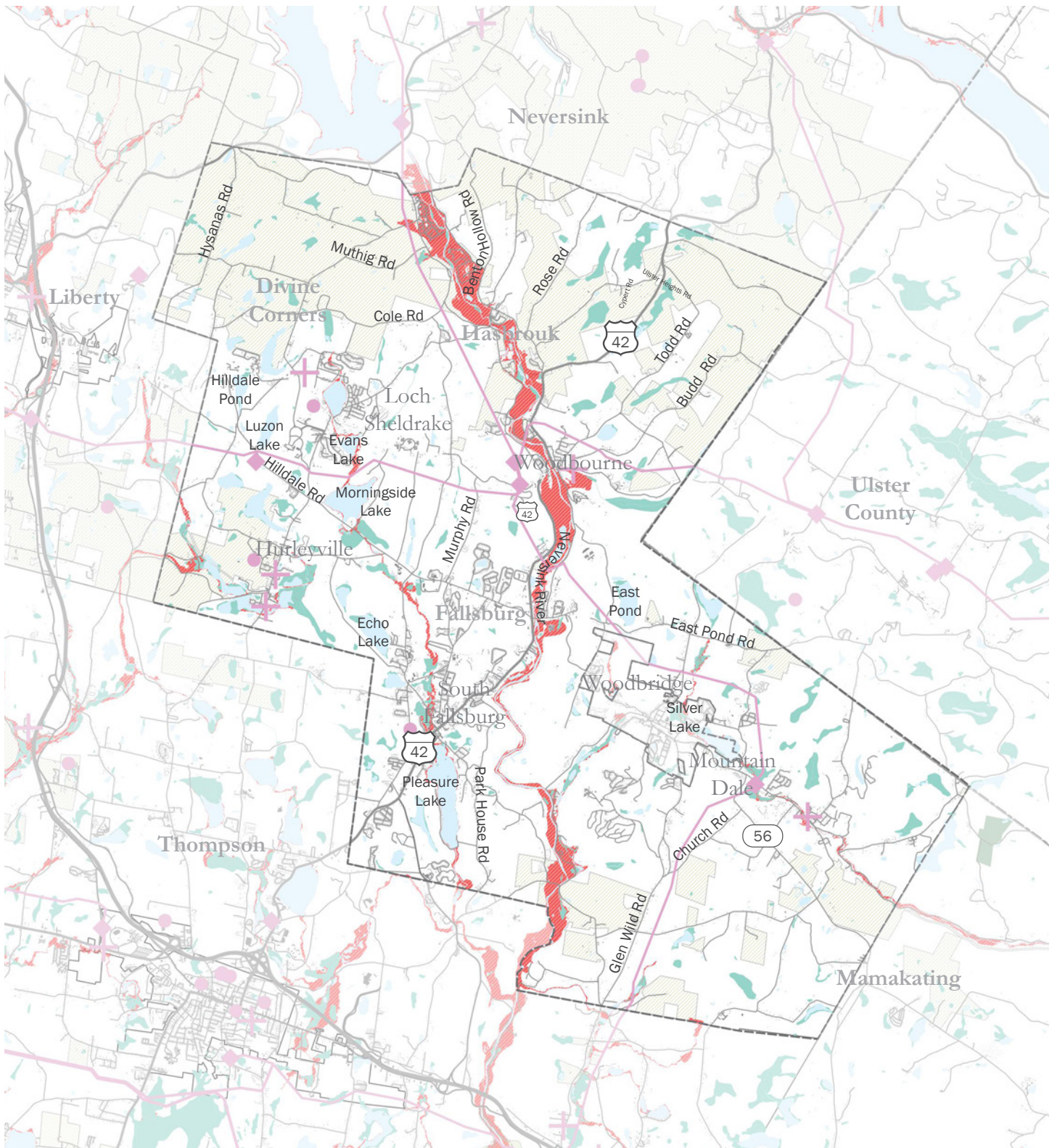
**3** tornado

### Select Vulnerable Locations

- During major storms, particularly wind storms, the Mountaindale Fire District facilities experience power outages
- Hamlet of Hurleyville is vulnerable to flooding due to presence of beaver dams and wetlands
- Flooding on Hasbrouck Rd and campgrounds located along

## Flooding

**1199** or 9% properties at flood risk



Sullivan County Resiliency Plan  
**Town of Fallsburg**



**INFRASTRUCTURE**

- Linear Energy Infrastructure
- Energy Infrastructure
- Medical Facilities
- Telecommunications Infrastructure

**WATER**

- Waterbodies
- Streams / Tributaries
- Wetlands
- Flood Zones A, AE, and X500

**AGRICULTURE**

- Agricultural District 4