

Town of Neversink: Resiliency Fact Sheet

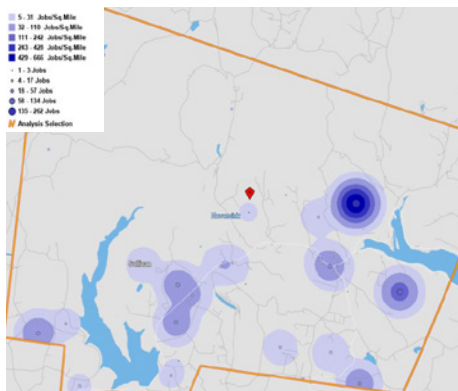
Demographic Key Points

3,392 residents of Neversink
4.3% of County population
47.4% residents are age 50 or older

Housing

1,940 housing units in Neversink
80% housing units are single family homes
25.7% housing stock vacant for seasonal use

Employment + Labor Force



Household Characteristics
34.9% of the Town's 1,441 households are single person. Only 26% of households have Children under the age of 18, compared to 28.6% of Sullivan County households.

Rent Burdened Residents
65% of renters, 27.2% of owners with mortgages and 12.4% of owners without mortgages are cost-burdened, meaning that more than 30% of household income goes to rent or mortgage payments.

605 jobs in Neversink in 2019
42.1% of jobs in Education
220 persons live and work in Neversink

Agriculture

Right-to-Farm
Neversink is one of the 11 municipalities in Sullivan County that has enacted a "Right to Farm" law. Parts of NYS Agricultural District #4 falls within Neversink. The Town is and home to an array of agricultural assets such as plant and tree farms and maple syrup processing.

- Agricultural Assets**
- Furman Farms
 - Catskill Mountain Sugar House
 - The Gotsch Tree Farm
 - Storey's Neversink Plant Company
 - Justus Asthalter Maple Syrup

Tourism + Outdoor Recreation

Neversink has an interesting role in Sullivan County History. It is the birthplace of American fly fishing.

- Natural and Historical Assets**
- Neversink Reservoir and Dam Overlook
 - Rondout Reservoir
 - Grahamsville Little World's Fair
 - Time and the Valleys Museum
 - Daniel Pierce Library
 - Chestnut Creek Covered Bridge

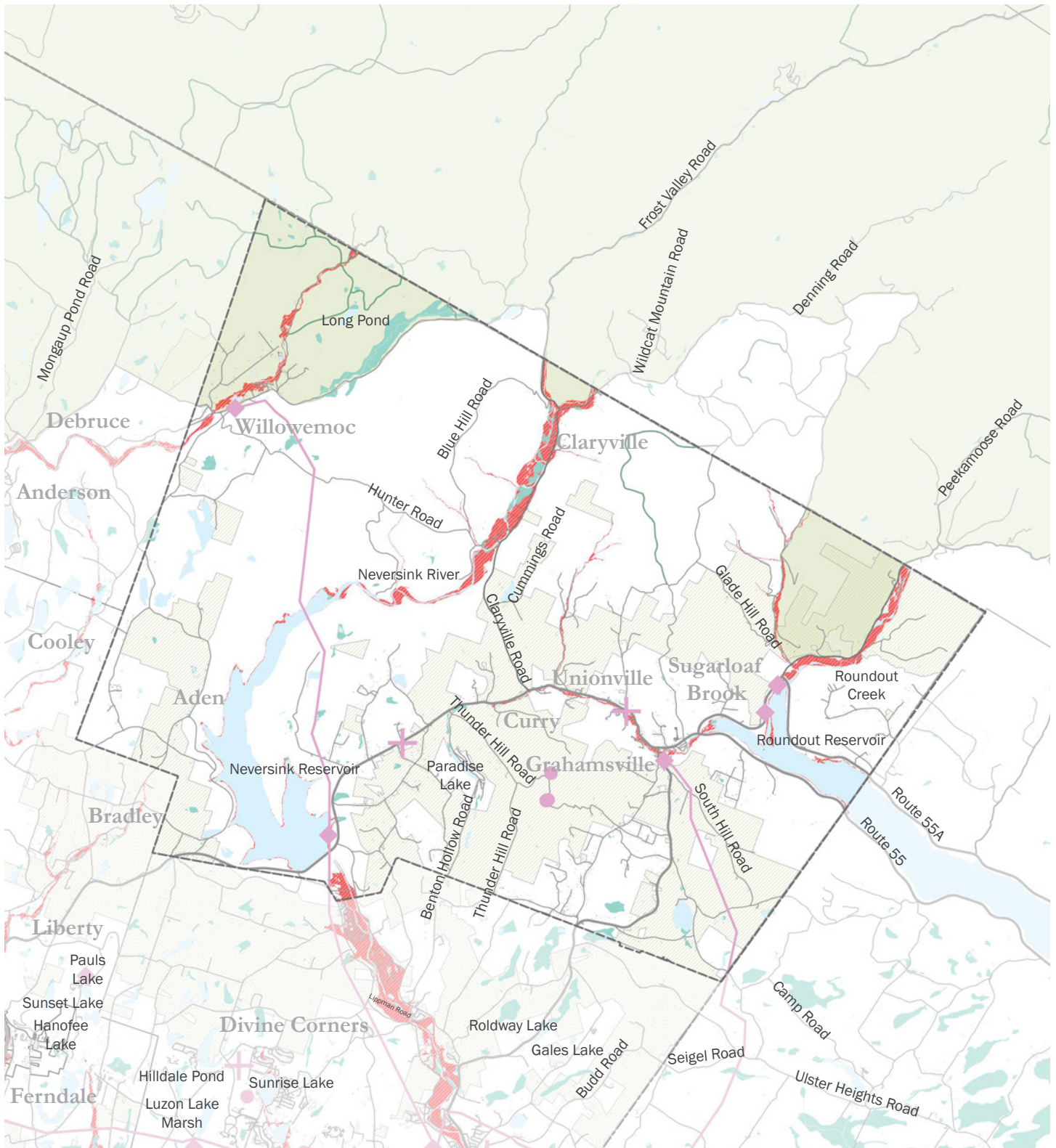
Risks and Vulnerable Systems

- 1** wind
- 2** flooding
- 3** snow storm
- 4** ice storm

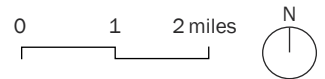
- Select Vulnerable Systems**
- 2 communication towers do not have emergency back-up systems
 - Response radio communication services are faulty
 - RV Park on Willowmuch Rd has no cell services and could be cut off from water during flood event

Flooding

690 or 14.7% of properties at flood risk



Sullivan County Resiliency Plan
Town of Neversink



- FORESTS AND AGRICULTURE**
- Matrix Forest Blocks
 - Agricultural District 4

- INFRASTRUCTURE**
- Linear Energy Infrastructure
 - Energy Infrastructure
 - Medical Facilities
 - Telecommunications Infrastructure

- WATER**
- Waterbodies
 - Streams / Tributaries
 - Wetlands
 - Flood Zones A, AE, and X500