

Town of Rockland: Resiliency Fact Sheet

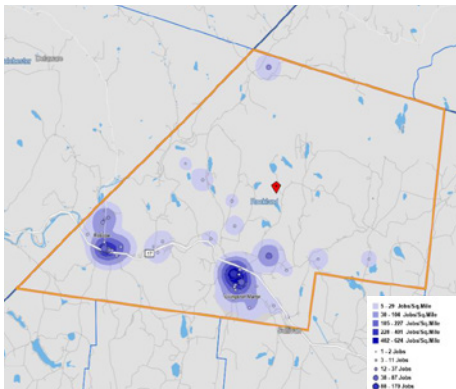
Demographic Key Points

3,346 residents of Bethel
4.2% of County population
93.8% residents speak English at home

Housing

1,589 housing units in Rockland
445 housing units classified as "Other" structures
42.5% housing stock vacant for seasonal use

Employment + Labor Force



Household Characteristics

42% of the Town's 1,142 households are single person. Only 18% of households have children under the age of 18, compared to 29.6% of Sullivan County households.

Housing Structures Vulnerability

Housing units that are classified as "Other" structures, i.e., mobile homes or trailers. These units are particularly vulnerable to severe weather events.

756 jobs in Rockland in 2019
30.6% of jobs in Education
299 persons live and work in Bethel

Tourism + Outdoor Recreation

2 State-run campgrounds
16% of Town is part of the Catskill Forest Preserve

Tourism in Rockland

Rockland is home to portions of the Willowemoc Wild Forest and the Delaware Wild Forest, all of the inherent activities and hiking trails. There are many other tourist attractions ranging from historical points of interest to stops on the Wine & Spirits Trail to music festivals and the Catskill Fly Fishing Center and Museum.

Agriculture

Rockland is a Right-to-Farm community, located in Agricultural District 4. It is home to some of Sullivan County's most important agricultural resources.

Trout Town USA

Sullivan County lays claim to being the "birthplace of fly-fishing in the United States" largely because of trout fishing on the 27-mile-long Willowemoc Creek intersecting with the Beaver Kill, which flows between Livingston Manor and Roscoe, NY. There are well known public fishing areas near Roscoe, Craigie Clair, and Beaverkill Campground.

Tourism Attractions

- Huggins Lake Trailhead
- Do Good Spirits
- Catskill Brewery
- Livingston Manor Covered Bridge Park
- Shandeele Music Festival
- Van Tran Flat Covered Bridge

Farms in Rockland

- Beaver Lake Farm
- Sunny View Farms
- Trout Town Farms
- Snowdance Farm
- Wild Roots Farm
- Henderson Hollow Farm

Town of Rockland: Resiliency Fact Sheet

Risks and Vulnerable Locations

- 1 flooding
- 2 ice storm
- 3 cold wave
- 4 lightning
- 5 drought
- 6 wind

Select Vulnerable Systems

- Private water sources (e.g. older wells and spring fed private residences) report loss of water sources during drought dryspells.
- 7 Cell towers are regularly struck by lightning.
- Livingston Manor downtown located within floodplain

Hydrology

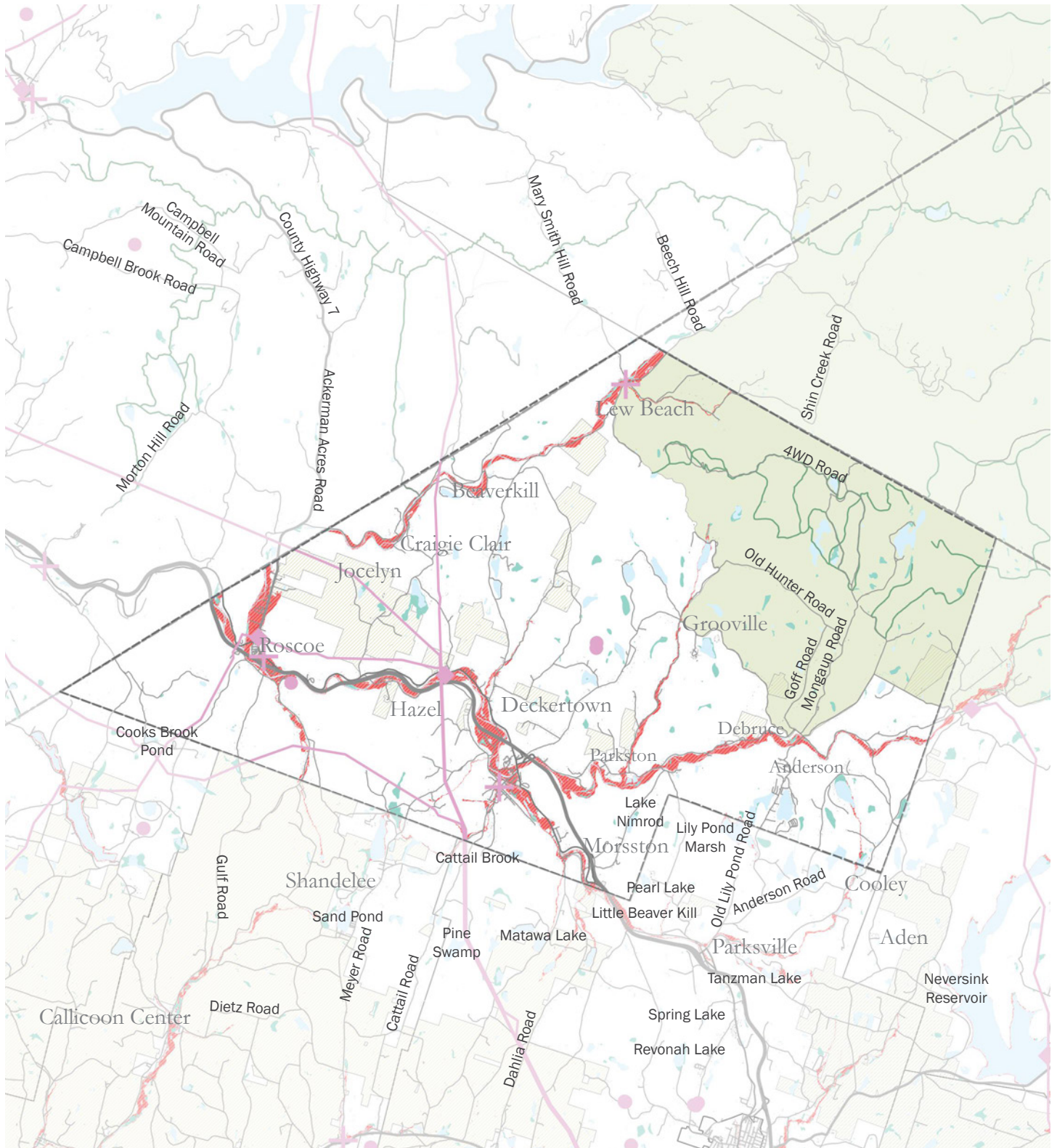
- 14 miles of Delaware River shoreline
- 30 State-designated wetlands

Major Tributaries

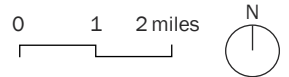
- Beaver Kill
- Sprague Brook
- Mongaup Creek
- Hunter Brook
- Cattail Brook
- Willowemoc Creek

Flooding

- 1,205 or 13.9% properties at flood risk



Sullivan County Resiliency Plan
Town of Rockland



- FORESTS AND AGRICULTURE**
- Matrix Forest Blocks
 - DEC Trails
 - Agricultural District 1

- INFRASTRUCTURE**
- Linear Energy Infrastructure
 - Energy Infrastructure
 - Medical Facilities
 - Telecommunications Infrastructure

- WATER**
- Waterbodies
 - Streams / Tributaries
 - Wetlands
 - Flood Zones A, AE, and X500