

Town of Fremont: Resiliency Fact Sheet

Demographic Key Points

1,257 residents of Fremont

1.7% of County population

12 hamlets

27.3% residents over age 65

Household Characteristics

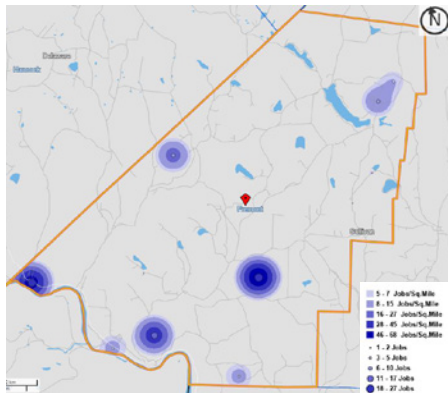
27% of the Town's 522 households are single person. Only 17.8% of households have Children under the age of 18, compared to 29.6% of Sullivan County households.

Housing

1,441 housing units in Bethel

56.5% housing stock vacant for seasonal use

Employment + Labor Force



93 jobs in Fremont in 2019

32.3% of jobs in Manufacturing

29% of jobs in Transportation and Warehousing

22 persons live and work in Bethel

Agriculture

50% of Town area is NYS Agricultural District 1

The Town of Fremont includes several valuable farms and major timber resources. Among these are dairies, horse farms and small beef operations. Fremont is one of the 11 municipalities in Sullivan County that has enacted a "Right to Farm."

Tourism + Outdoor Recreation

As well as being home to almost 1000 seasonal homes, there are several tourism and outdoor recreation opportunities in Fremont catering to hiking, fishing and hunting. These include Crystal Lake Wild Forest Nature Preserve, Tennanah Golf and Tennis Club, the Maspeth Rod & Gun Club, Fernwood Firearms, and Catskill Pheasantry and Clays. Historic and Scenic assets include The Riverside Cemetery in Long Eddy, Anthony Manny House, Hankins Stone Arch Bridge, and the Hankins School District No. 1 Schoolhouse.

Risks and Vulnerable Locations

1 flooding **4** wind

2 snow storm

3 ice storm

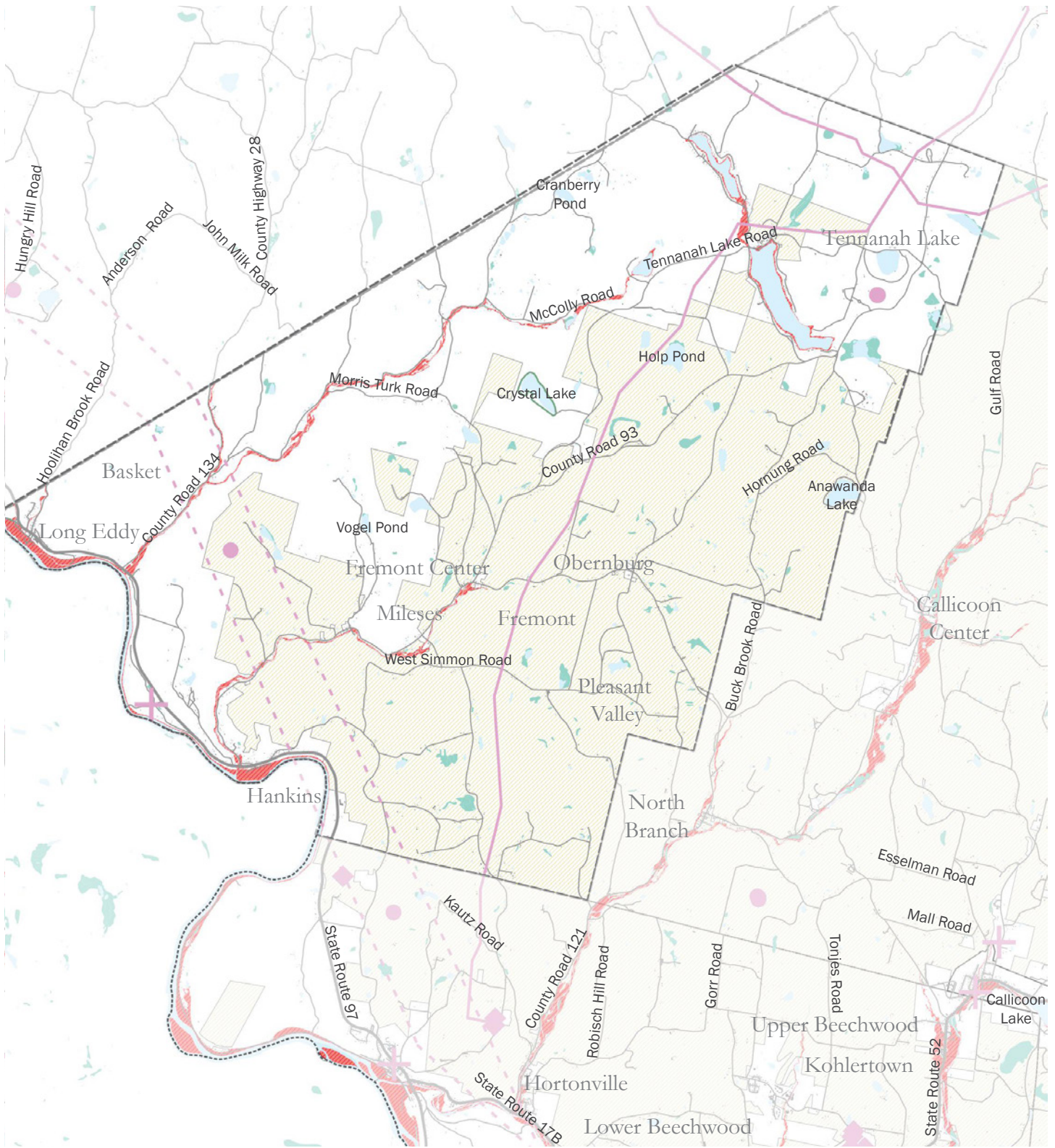
Flooding

549 or 20% properties at flood risk

Water





Water Supply

Only Long Eddy has a public water supply system. Otherwise, all homes and businesses are supplied by individual wells.

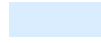





Sullivan County Resiliency Plan
Town of Fremont

INFRASTRUCTURE

-  Linear Energy Infrastructure
-  Energy Infrastructure
-  Medical Facilities
-  Telecommunications Infrastructure

WATER

-  Waterbodies
-  Streams / Tributaries
-  Wetlands
-  Flood Zones A, AE, and X500

AGRICULTURE

-  Agricultural District 1

