

Town of Forestburgh: Resiliency Fact Sheet

Demographic Key Points

914 residents of Forestburgh

1.2% of County population

31% residents above age 65

Household Characteristics

Only 20% of the Town's 403 households are single person. Only 13.6% of households have Children under the age of 18, compared to 29.6% Sullivan County households.

Housing

403 housing units in Forestburgh

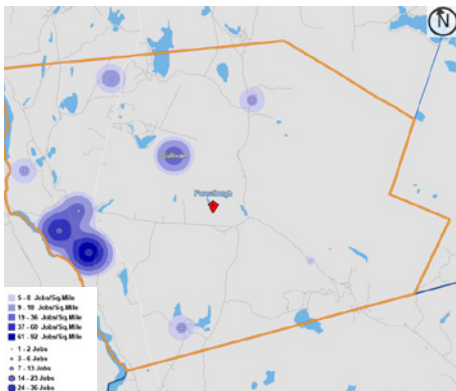
93.5% single family homes

31.6% housing stock vacant or for seasonal use

Household Characteristics

The Town's population is concentrated along Highway 42 with very little of the population located in the floodplains.

Employment + Labor Force



104 jobs in Forestburgh in 2019

34.6% of jobs in Public Administration

22.1% of jobs in Utilities

6 persons live and work in Forestburgh

Agriculture

Right-to-Farm

Forestburgh is one of the 11 municipalities in Sullivan County that has enacted a "Right to Farm" law. Parts of NYS Agricultural District #1 falls within Forestburgh.

Tourism + Outdoor Recreation

Forestburgh has several noteworthy cultural attractions including The Forestburgh Playhouse, Merriewold Park, the Sho Fu Den Japanese palace from the 1939 World's Fair, and the Inn at Lake Joseph. Outdoor recreational highlights include the Bald Eagle Habitat on the Mongaup River; the Forestburgh Scout Reservation.

Risks and Vulnerable Locations

1 ice storm

4 wind

2 snow storm

5 lightning

3 flooding

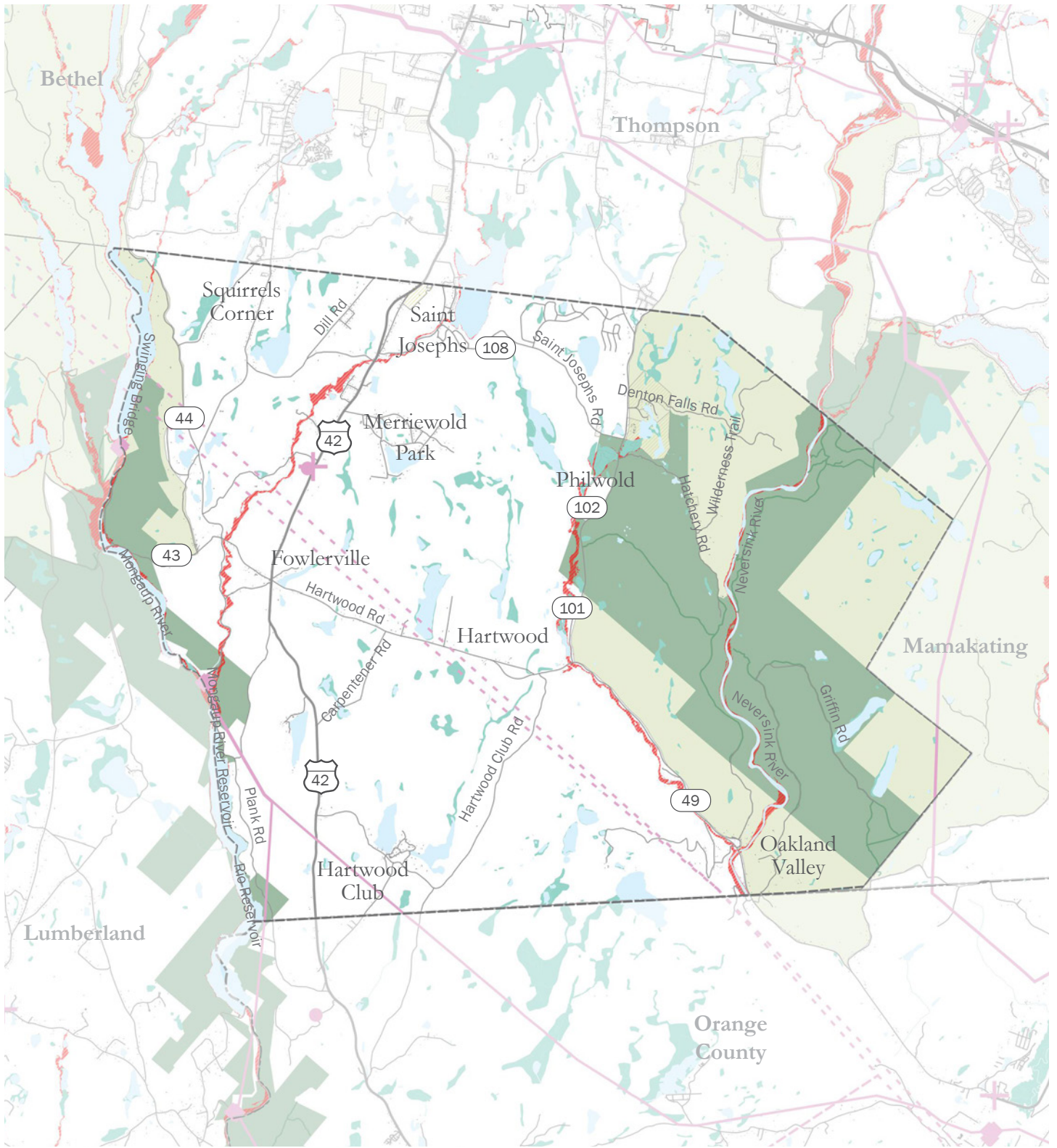
6 tornado

Select Vulnerable Locations

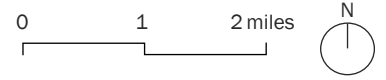
- Major storms, particularly microbursts, cause power outages on the North Road,
- Flooding on Rt 42/43 crossing due to heavy rainfall or snowfall
- Road washout on Dill Rd. due to steep topography

Flooding

77 or 6.3% properties at flood risk



Sullivan County Resiliency Plan
Town of Forestburgh



FORESTS

- Matrix Forest Blocks
- DEC Forest Lands
- DEC Trails

INFRASTRUCTURE

- Linear Energy Infrastructure
- Energy Infrastructure
- Medical Facilities
- Telecommunications Infrastructure

WATER

- Waterbodies
- Streams / Tributaries
- Wetlands
- Flood Zones A, AE, and X500